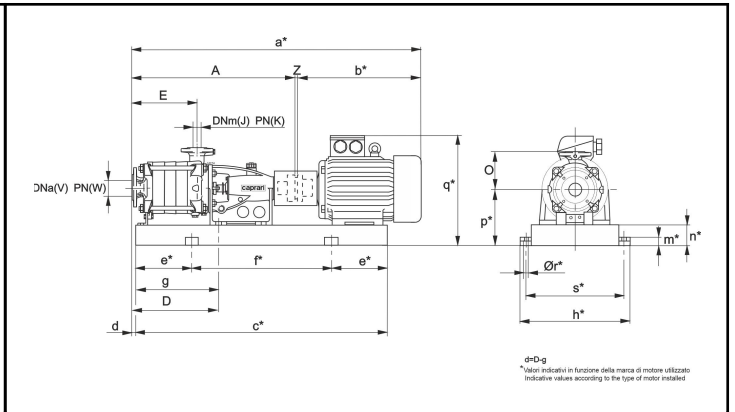
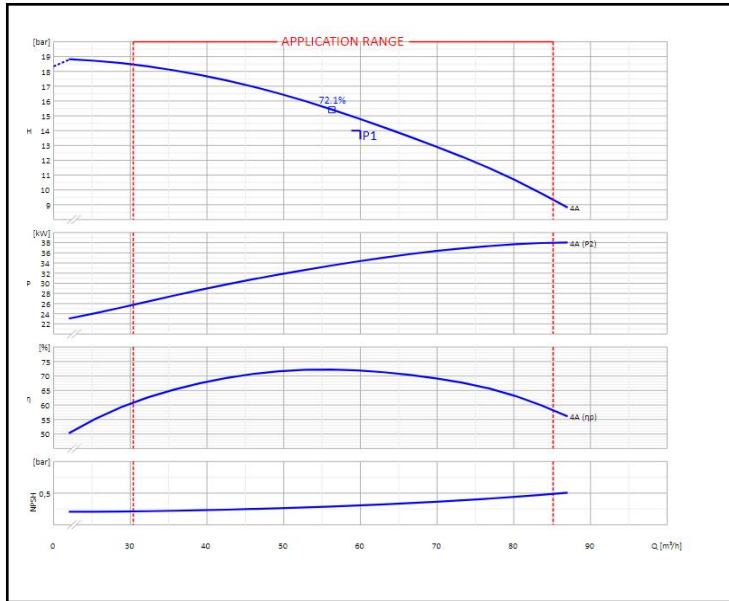


Customer:				Ref.:			
Item	1	Quantity	1	Required flow rate	60 m ³ /h	Required head	14 bar
Type	CENTRIFUGAL PUMP WITH HORIZONTAL SHAFT			Model	HMUT50-2/4A		



Dimensions [mm]					
a	1622	h	585	s	535
A	843	J	50	V	80
b	775	K	40	W	16
c	1447	m	42	Z	4
D	451	n	120		
e	250	o	200		
E	342	p	345		
f	947	q	675		
g	425	r	20		

OPERATING DATA- ISO 9906:2012 3B -					CONSTRUCTION CHARACTERISTICS			
Q [m ³ /h]	H [bar]	P [kW]	η [%]	NPSH [bar]	UNI delivery flange DN	50	PN	40
					UNI suction flange DN	80	PN	16
					Total weight	523		Kg
					No. Stages	4		
					Pump seal	Mechanical		
					Type of installation	Horizontal on baseplate		
****	****	****	****	****	Baseplate	BGA381/4E		

OPERATING LIMITS			OPERATING CHARACTERISTICS			
Pumped liquid	Water		Service flow rate		61.2	m ³ /h
Max. temperature of pumped liquid	90 °C		Service head		14.6	bar
Maximum density	1	kg/dm ³	Qmin	Qmax	30.4	85.1
Maximum viscosity	1	mm ² /s	H (Q=0)	Hmax (Qmin)	17.6	18.4
Max. solid content	0	g/m ³	P2 Duty Point	P2max	34.5	37.9
Max. no. starts/hr	3		Pump efficiency	Overall efficiency	71.51	67.3
Maximum operating time with closed port	3min (3500 rpm)	[40 °C]	Rotation speed	2960 1/min		
			Sense of rotation (*)	Clockwise		
			Number of pumps installed	Operating	Stand-by	
				1	0	

PUMP MATERIALS		ELECTRIC MOTOR CHARACTERISTICS			
Delivery body	Cast iron	Brand			
Suction support	Cast iron	Model	H304502T2B32252		
Impeller	Stainless steel	Nominal power	45	kW	
Pump shaft	Stainless steel	Rated frequency	50	Hz	
Flange for mechanical seal	Cast iron	Rated voltage	400	V	
Flange bearing	Cast iron	Efficiency class	IE3		
Diffuser	Cast iron	Use with inverter			
Cooling jacket	Cast iron	Rated current	77.6	A	
Pedestal	Cast iron	No. Poles	2	2960	1/min
Shaft sleeve	Stainless steel	Nominal speed			
Mechanical seal	Stainless steel/graphite	Type of motor	3 ~		
Bearing	-	Efficiency 4/4 - 3/4	94.0 - 94.1 %		
Seal ring	Rubber	Power factor 4/4 - 3/4	0.89		
OR seal ring	Rubber	Insulation class	F		
		Is/In	Ts/Tn	7.7	2
		Type of starting			
		Protection class	IP55		
		Thermal protection	Service Factor	PTC	1

Notes:	(*) View from motor coupling side	
OFFER No. alt. A/00	Pos. 1.1	Date 11/06/2025