

## Semi-Auto Flatbed Screen Printing Machine

### Machine Description

Screen Printing Machine is suitable for Flat surface printing on Printed circuit boards, Textile transfers, Paper , Stickers, Membrane switch,Signage, Glass, Wooden board, PVC film and so on.



### Main Features

- 1.Squeegee carriage on Hard Chrome Plated solid steel shaft with linear bearing motion.
2. Adjustable screen frame holder
3. Variable printing stroke length
4. Single/Double stroke selection
5. Parallel screen frame movement(Convenient for spot UV varnish and low viscosity inks to avoid ink spillage all over the screen)
6. Peel off mechanism (To achieve fine reproduction of halftone dots and avoid smudging, bleeding and smearing)
- 7.Adjustable squeegee angle from 0 to 30°
- 8.Aluminium extruded squeegee holder & coater for even pressure
- 9.Bed movement for registration x, y, & Rotary ±10 mm
- 10.Emergency Rod / Stop for safety of operator
- 11.Castor wheels for easy mobility
- 12.Printing operation by foot switch or automatic cycle, with dwell timer 0-10 sec.

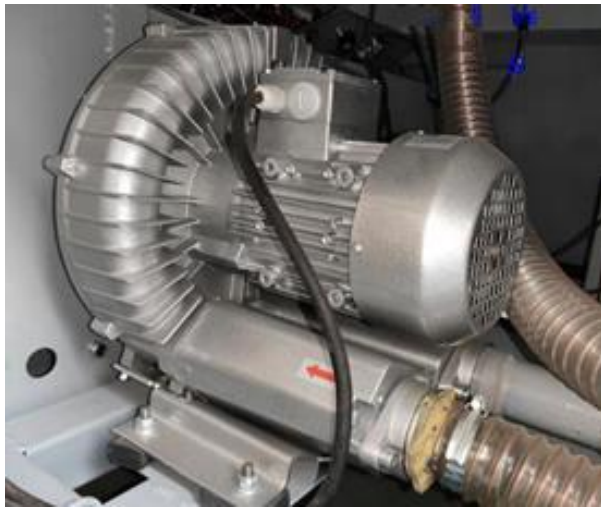
### Detailed Images



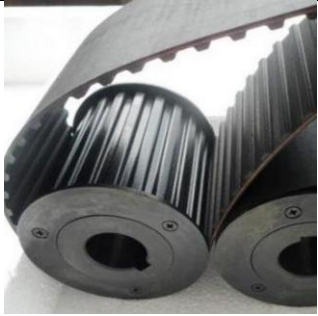
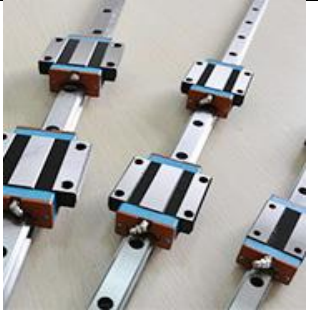


FRONT VIEW



BACK VIEW



High precision vacuum table

Powerful vacuum pump			
			
Imported timing belt	Precision Guide Rail	VFD (Variable Frequency Drive)	Squeegee / flood bar clamping

## Özellikler

	Model	HS-5080ST
	Printing size	500mm*800mm
	Vacuum bed	600*900mm
	Max frame size	700*1200mm
	Min frame size	300*500mm
	Substrate height	25 mm
	Vacuum bed adjustment	±20 mm
	Printing capacity	1000pcs/hour
	Air source	0.4~0.6Mpa
	Voltage	AC220V/380V50/60Hz
	Power	2.3kW
	N.W/G.W	530kg/560KG
	Dimension	1260*910*1650 mm

## Printing Sample



**SHEETS ( paper/PET/PVC/cardboard )**

