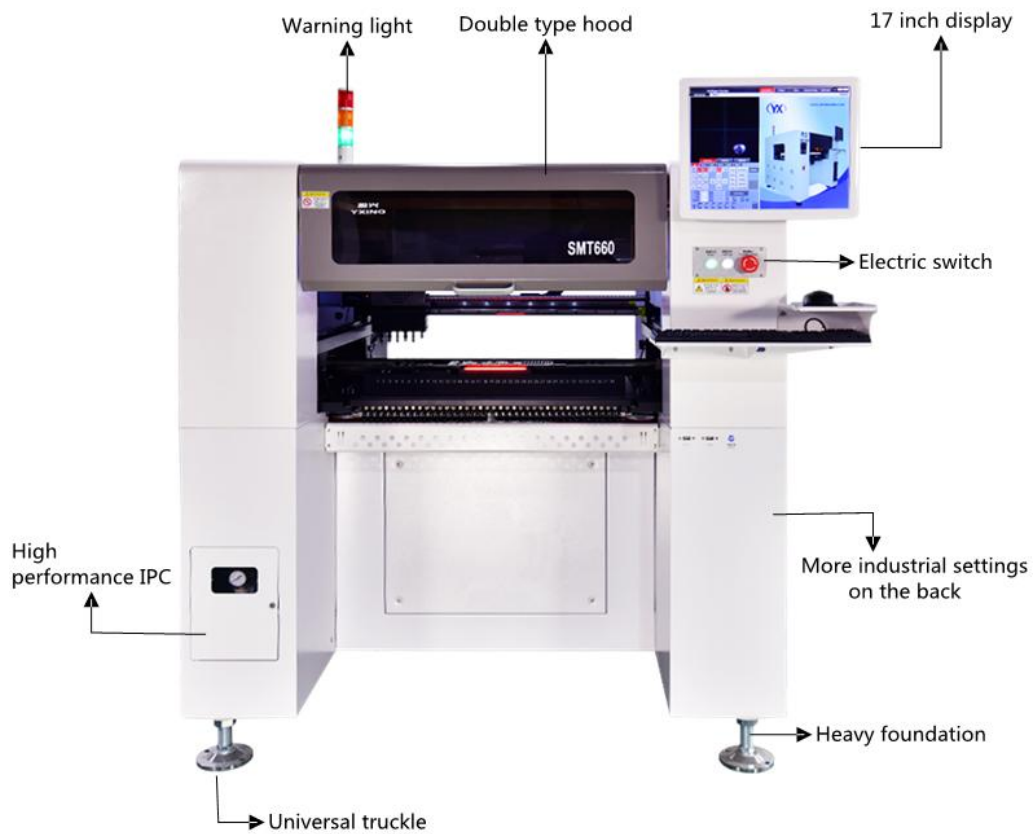


## Full-automatic SMT Machine

Model: SMT660



## Product Description

Wenzhou Yingxing Technology Co.,Ltd has, after eight years of technology accumulation, launched a stable and reliable full-automatic chip mounter for medium-sized enterprise with a higher cost performance at the request of most old and new customers. The latest product can meet batch production. It can support to mount common **0201** , 0402, 0603, 0805, 1206, 1210, LED3528 devices, LED5050 encapsulation device, diode, audion SOT, etc. in a stable and accurate way; and the following three main functions are added:

I. The biggest highlight of this equipment is to add imported HD industrial-grade calibration camera with 5 million pixels of professional SMT chip and the matched HD orthoscopic industrial vision camera with 5 million pixels; it can effectively mount the chip within 40\*40mm and the pin distance above 0.3mm (0.5mm center distance) after technical breakthrough and improvement, and the success rate is higher than 98%. It helps to completely solve the problem of mounting the chip with close pin and BGA chip.

II. Four industrial-grade quick-recognition cameras are added, and their simultaneous recognition helps to promote the mounting rate, which is almost double based on the original one.

III. Automatic scanning mark point and automatic board entering function are added, which can further improve the mounting precision when replacing the PCB board and improve the production efficiency, and make the operation more convenient and simple; the equipment can also connect to other equipment to create SMT assembly line.

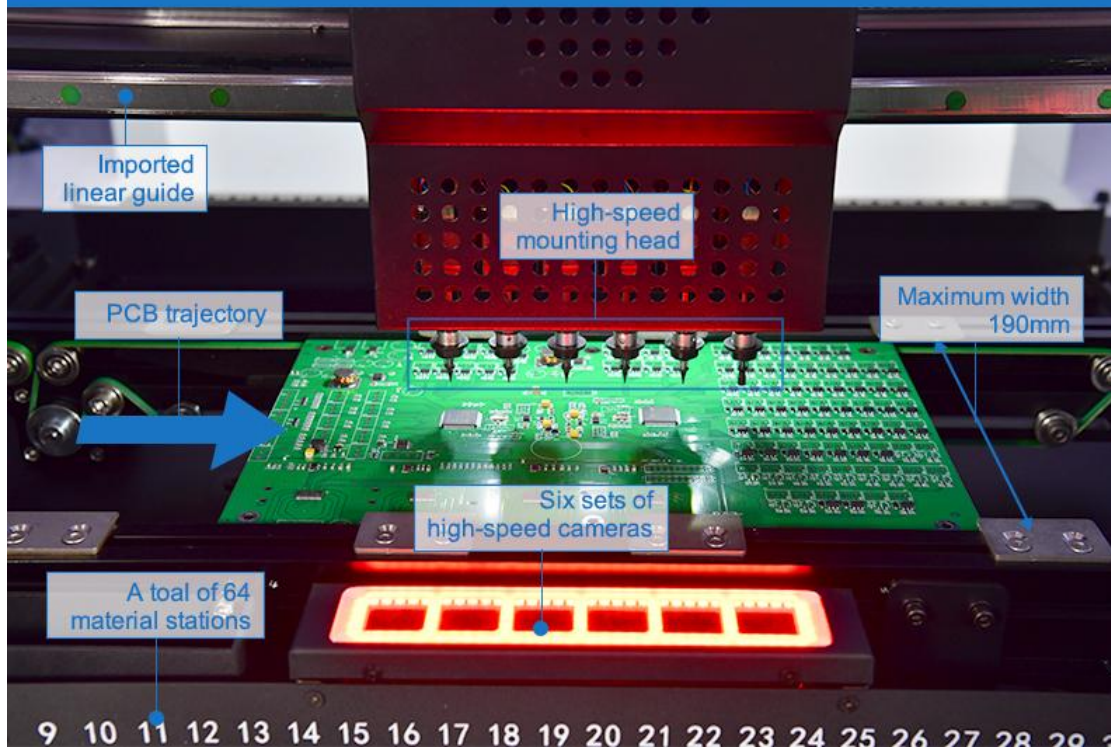
The ultimate test has been completed and this product has put into market. The product is a real cost-effective automatic mounter with high -end configuration and stable property, and the operation is simple and easily understood.

## Product Parameters

|   |   |
|---|---|
| Model   | <b>SMT660</b>   |
| Number of feeders                                       | <b>64</b>   |
| Number of head  | 6   |
| Number of camera  | 8   |
| Number of IC tray                                       | 6   |
| Place height (option)                                   | <b>20mm</b>   |
| Average power   | 500W  |
| Positioning precision                                   | 0.01mm  |
| The buffer range of suction nozzle                      | 4.5mm   |
| Power supply  | 220V, 50/60Hz   |
| Compressed air  | 0.5-0.6Mpa  |
| Drive motor   | <b>Panasonic servo motor</b>                                  |
| Vacuum source of suction nozzle                         | high-speed on-off vacuum generator<br>with vacuum breaker     |
| Maximum circuit board area                              | 600×455mm   |
| Maximum travel scope in Z axis                          | 20mm  |
| Tape feeder   | 8, 12, 16, 24mm and vibration suction<br>(mounting pipe chip) |
| Maximum mounting speed                                  | <b>12000 pcs/hour</b>   |
| Average mounting speed of actual<br>mounting resistance | <b>9600 pcs/hour</b>  |
| XYZ drive guide rail                                    | <b>Taiwan TBI high-precision grinding<br/>miller</b>          |
| Motion drive system                                     | Panasonic high-speed DSP drive                                |
| Operating system  | full-automatic chip moulder operating<br>system independently |
|   | developed by Yingxing based on<br>Windows                     |
|   | operating system and it supports<br>windows XP                |
|   | win7 operating system   |

|                               |  |
|-------------------------------|--|
| Element angle                 | 0-360°, synchronous rotation during movement   |
| X/Y operation mode            | Intelligent curve of the linear acceleration and deceleration linkage                          |
| MARK point positioning        | Full-automatic (the MARK point can be adjust at will)  |
| Intelligent alarm             | Automatic correction, automatic filling, feeding shortage alarm                                |
| Plate entering mode           | Automatic connection from left to right in single sections                                     |
|                               | Automatic PCB transfer positioning,plunger positioning   |
|                               | Manual plate feeding   |
| Visual display                | 17-inch industrial control display, 4:3, resolution: 1280 x1024                                |
| Number of recognition cameras | One mark recognition camera, four quick-recognition cameras and one precise-recognition camera |
| Adaptive mounting scope       | Adaptive to <b>0201</b> , 0402, 0603, 0805, 1206, diode, audion, SOT, QFP                      |
|                               | within 40*40mm and the pin distance $\geq$ 0.3mm   |
|                               | (0.5mm center distance) and BGA  |
| Product weight                | 500KG  |
| Dimension                     | 1450*1370*1550mm   |

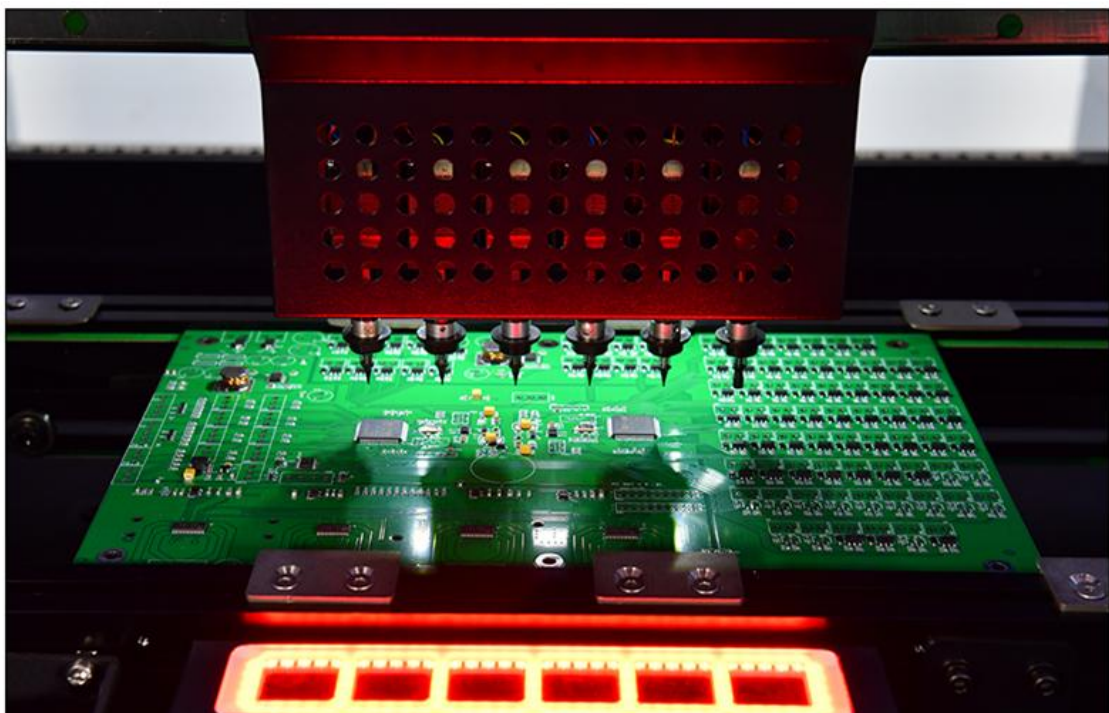
## Product Structure



## Why Choose Us?

### Six Placement Heads

6 nozzle heads, can take components synchronously in an automatically optimized way, which improve the speed up to 9000-13000CPH.





## Panasonic Servo Motor

Panasonic servo system-high precision, strong stability and never step out can ensure stable mounting for 24 hours.



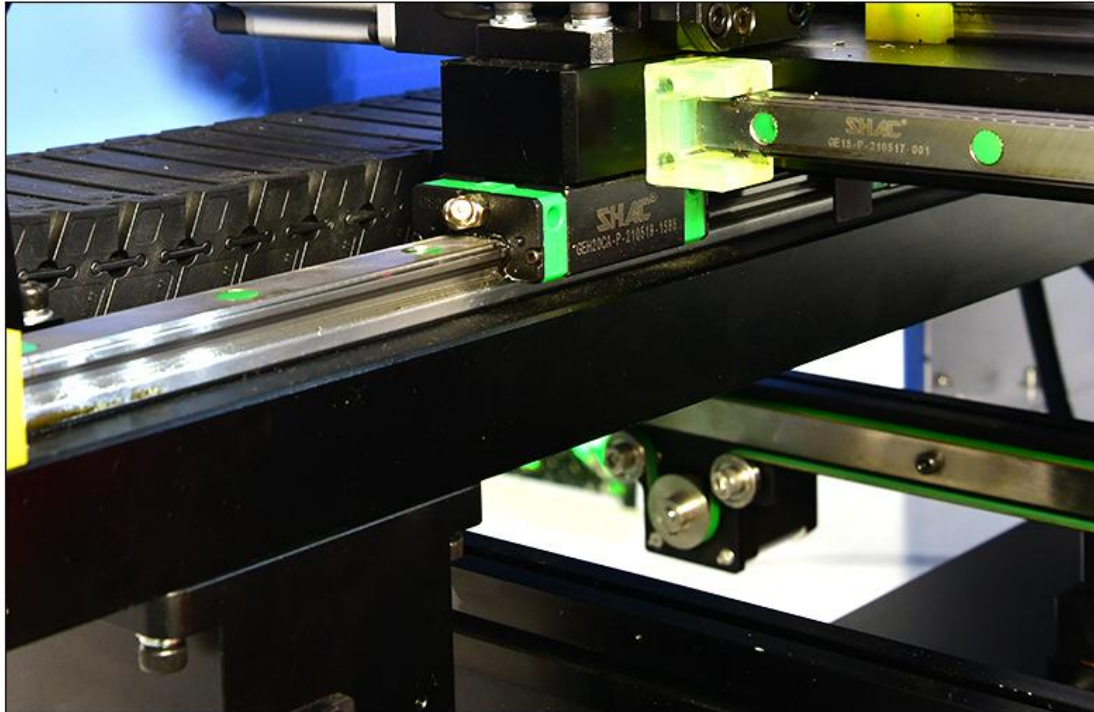
## Grinding Miller

The machine with the grinding miller and servo motor which is more stable and more accurate than the step motor and belt machine.



## Straight Guide Rail

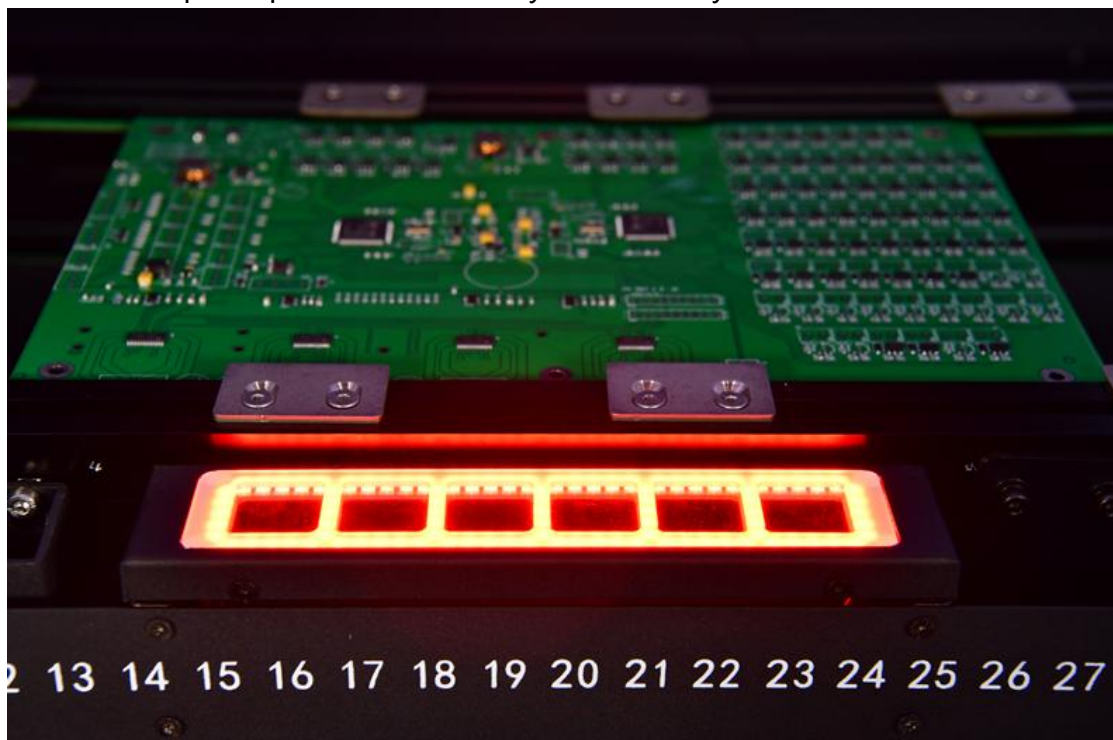
Taiwan TBI high-precision guide rail has light voice and high precision, which can effectively ensure the accuracy of 0402 and chip BGA.



## Product Details

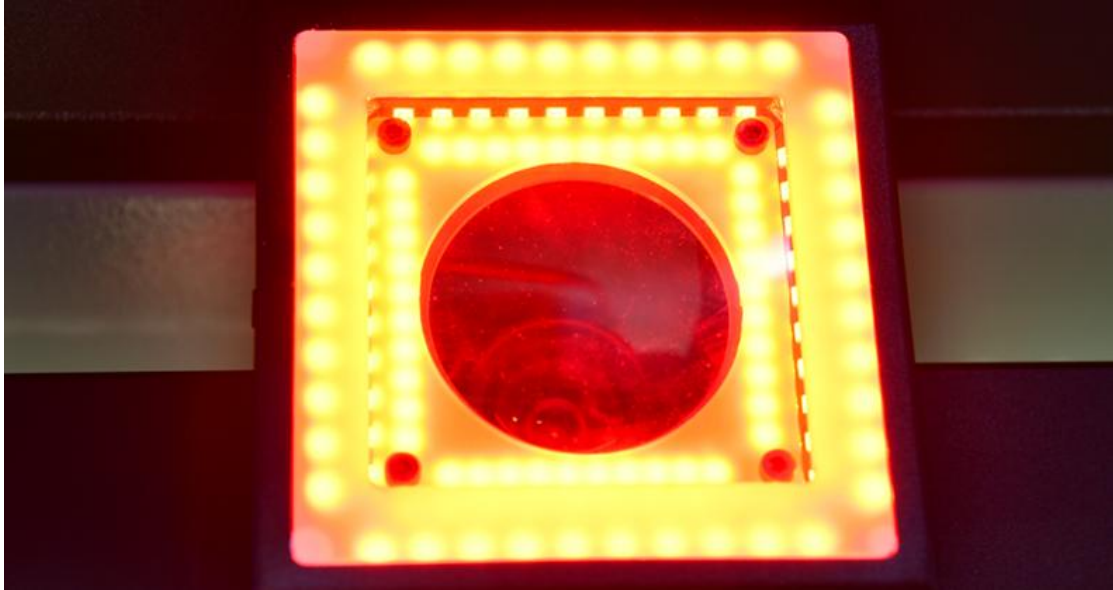
### 6 High-speed Recognition Cameras

6 groups of placement heads can pick up different components for visual correction, improve placement efficiency and accuracy.



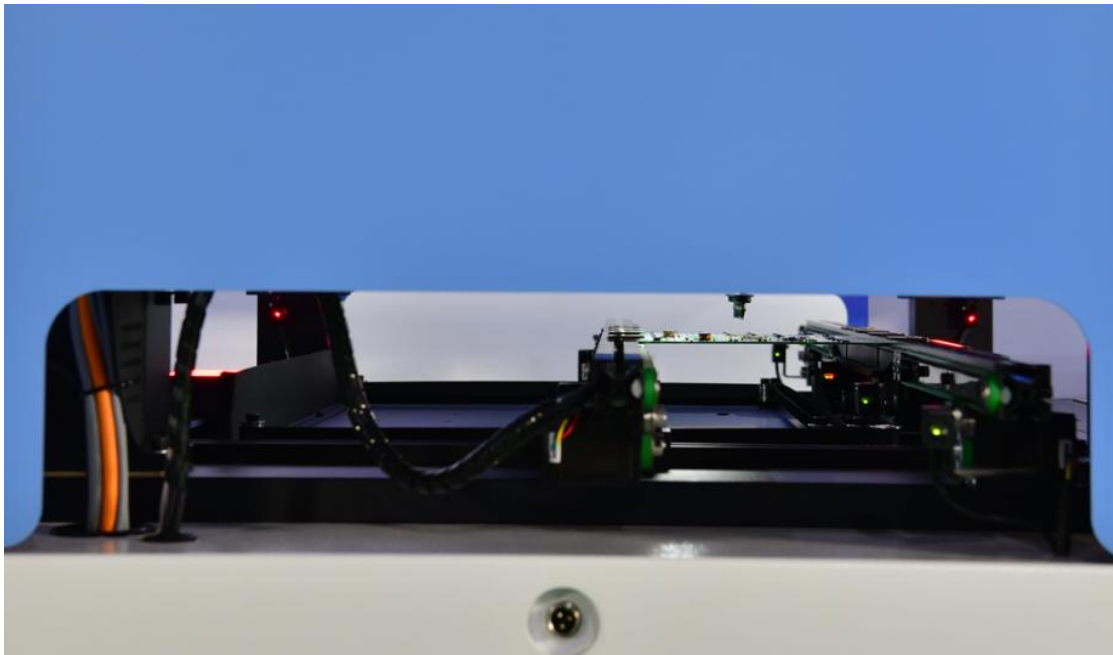
## High-resolution Vision Camera

High-resolution Sony vision correction camera, our mounter can mount chips within 40mm\*40mm.



## Automatic Board Entrance

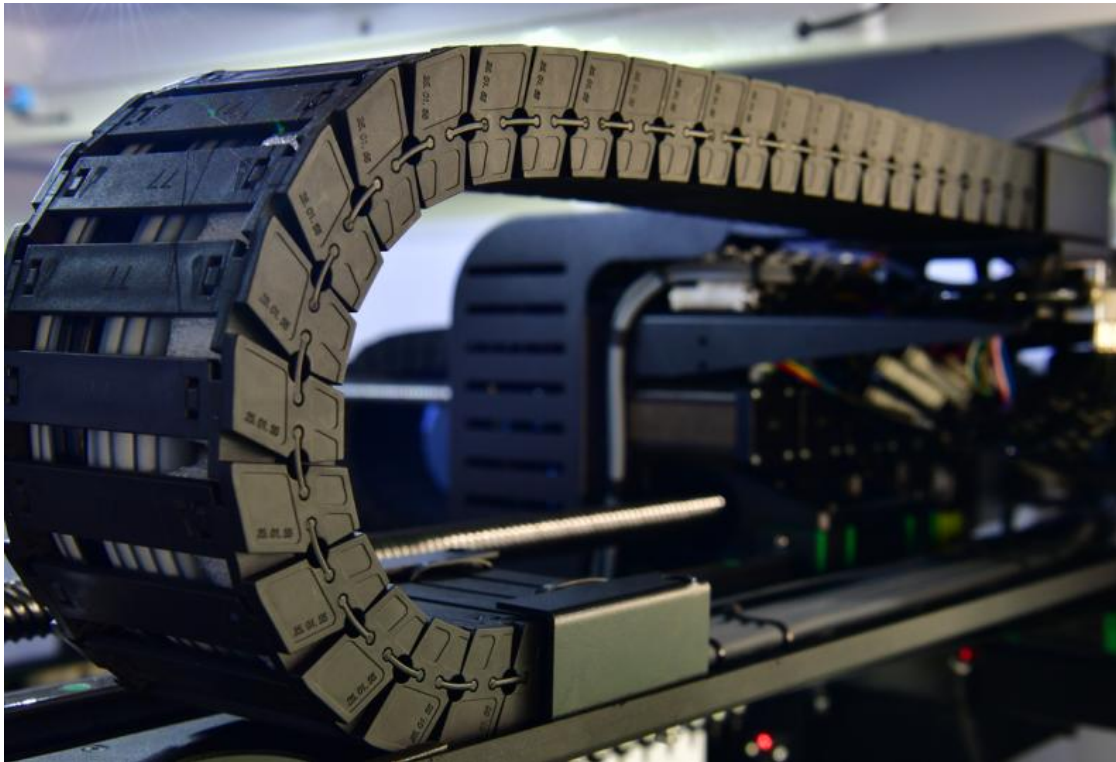
The PCB board can be directly put into the guide rail to realize automatic entering, automatic alignment and automatic mounting after printing eight cameras, one MARK, one high precision machine, six quick-recognition cameras and the simultaneous recognition of six heads effectively guarantee the mounting speed and accuracy; 16 standard JUKI high precision suction nozzles are equipped.





## Resisting Tank Chain

High-pressure wear-resisting tank chain-the same type tank chain of imported machine is adopted, with up to ten million times of withstand voltage.



## Software

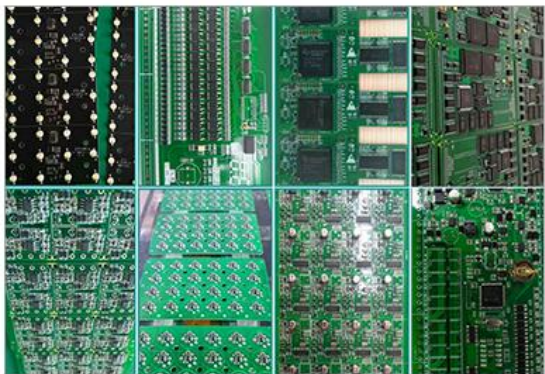
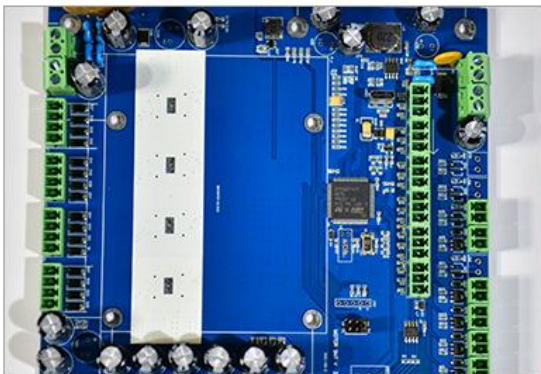
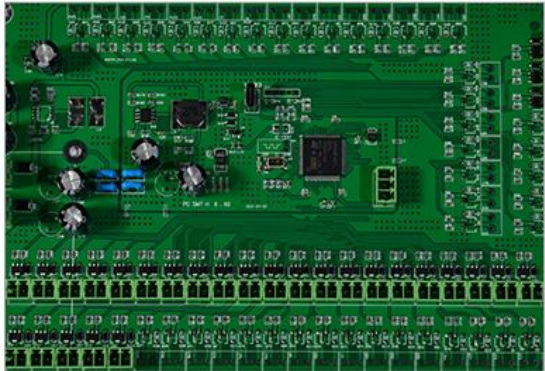
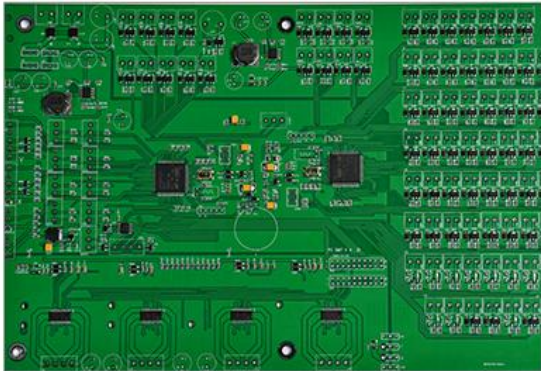
The standard computer display and mouse-support XP and W7 system, with humanized operating system; support visual programming, PCB file import.



# Package Photos



# Effect Picture





## Company Information



### About Us

Wenzhou Yingxing Technology Co.,Ltd established in 2009, has much experience in manufacturing professional SMT Machines.

We provide a whole line of SMT production line, including pick and place machine, reflow oven, and stencil printer with high accuracy, stability, and rigidity.

Our management team's energy and enthusiasm are strongly respected by our customers. To meet their satisfaction, we ensure precision quality at each step of our production line. We have successfully promoted our products in America, Europe, Asia and many other countries.