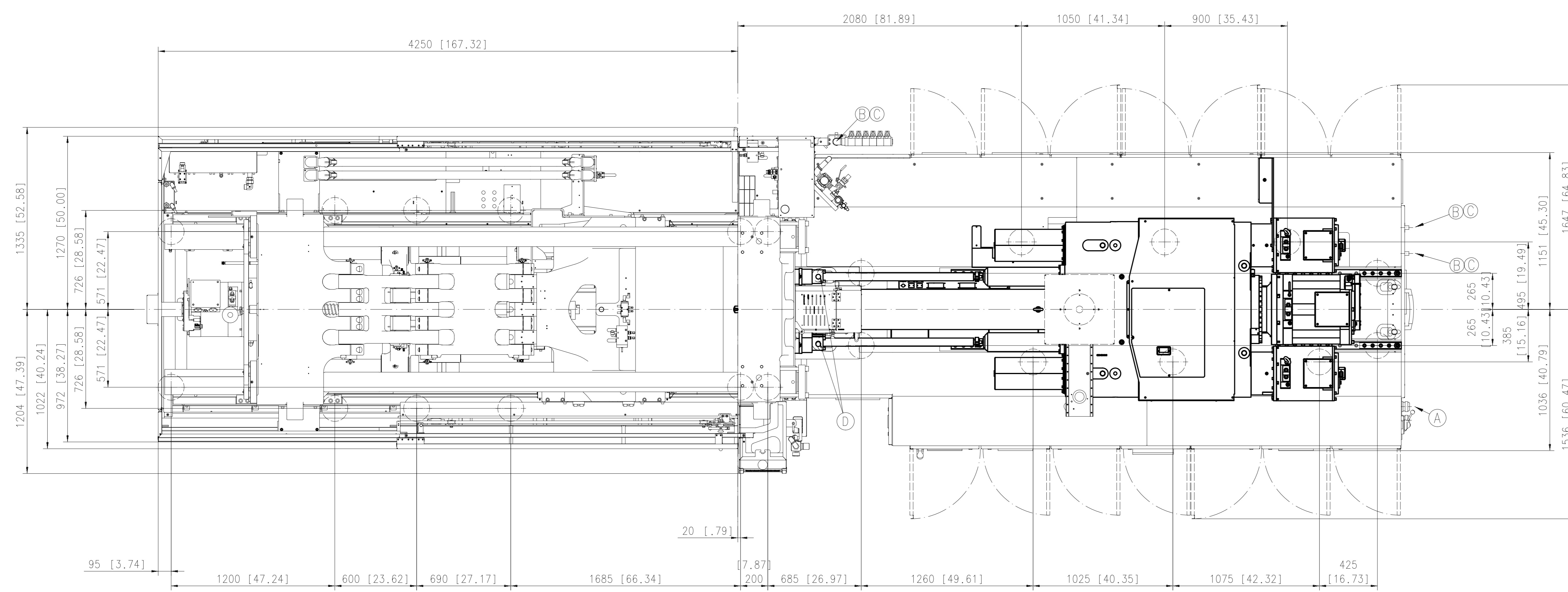
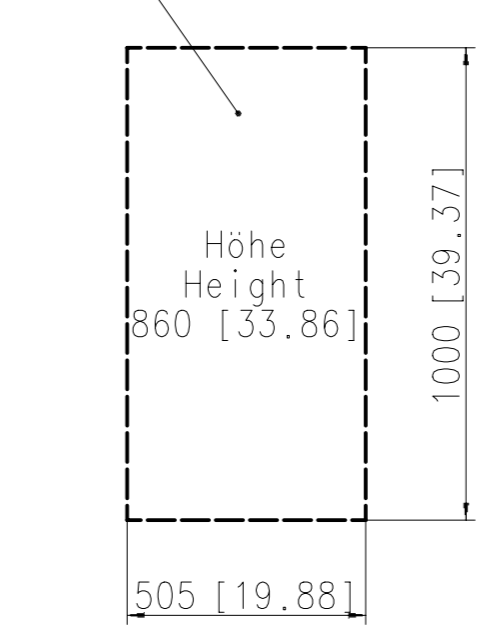


Mindestsicherheitsabstand
 hinterste Stellung Spritzaggregat
 bis zur nächstliegenden
 gefährdenden Störkontur
 Minimum safety distance:
 Most rear position injection unit
 up to the next lying,
 endangering disturbance contour



Option Trenntrafo bei:
 Option Isolation transformer:
 -Fehlerstromschutzschalter
 Residual device
 -IT-Netz
 IT-network
 -Netzspannung 3x220V/50-60Hz
 Power supply 3x220V/50-60Hz
 -Netzspannung 3x575V/50-60Hz
 Power supply 3x575V/50-60Hz



NOTICE - DIMENSIONS SHOWN IN PARENTHESIS REPRESENT METRIC VALUES CONVERTED INTO DECIMAL INCHES
 HINWEIS - IN KLAMMER GESETZTE WERTE REPRÄSENTIEREN DIE IN DEZIMALE INCH UMGERECHNETEN MASZANGABEN

TYPE	Massezylinder Schnecken ϕ Screw diameter	Gewicht, Machine weight	
		Schließeinheit clamp unit	Spritzeinheit injection unit
EM 3440/420T	80 L/D 25	24000 kg	12000 kg
EM 3440/460T US		26.46 UStons	13.23 UStons

- A Elektroanschluss
main connexion
- B Kuehlwasser - Zulauf/Schlauchstueck 3x 1"
cooling water-inlet/hosepipe
- C Kuehlwasser - Ablauf/Schlauchstueck 3x 1"
cooling water outlet/hosepipe
- D Transportvorrichtung
transport-device

STANDARD PLATEN

DESCRIPTION/BEZEICHNUNG MAIN DIMENSION FUNDAMENTPLAN		SCALE/MASSSTAB 1:16	
DRWING NO./ZNR. 7218-903-23-00-010	REV. NO./NR. 00	SHEET NO./BLATT NR. 1/1	DATE/TERMIN 2011-11-04
APPL. STD./NORM ETR10009 ISO 8015 ISO 2768-mK	ISO 1302 (1993) ab Serie 11534	OFFICE/ABT./NAME EMSR.Hinterreiter	COPY/FRAGENSCHR./ZNR. COPY FRAGENSCHR. ZNR.
MATERIAL/VERST./ENGL. AUSTRIA	MATERIAL/VERST./ENGL. NORTH AMERICA	MATERIAL/VERST./ENGL. KOREA	
ACC. TO/GENSST. ACC. TO/GENSST.	ACC. TO/GENSST. ACC. TO/GENSST.	ACC. TO/GENSST. ACC. TO/GENSST.	

REPRODUCTION, DISTRIBUTION AND UTILIZATION OF THIS DOCUMENT AS WELL AS COMMUNICATION OF ITS CONTENTS TO OTHERS WITHOUT EXPRESS AUTHORIZATION FROM ENGEL OPTICS WILL BE HELD LIABLE FOR THE PAYMENT OF DAMAGES. ALL RIGHTS RESERVED. COPYRIGHT (C) ENGEL OPTICS. SOME REPRODUCTION RIGHTS RESERVED. REPRODUCTION AND UTILIZATION OF THIS DOCUMENT IS PROHIBITED WITHOUT THE WRITTEN PERMISSION OF ENGEL OPTICS. REPRODUCTION AND UTILIZATION OF THIS DOCUMENT IS PROHIBITED WITHOUT THE WRITTEN PERMISSION OF ENGEL OPTICS.

ENGEL