

Offer for sale.

We offer a complete rubber mixing line that includes the following equipment:

- **Mixer EKN-50**

soft start and stop

automatic supply of lubricant,

control cabinet (can operate in automatic, semi-automatic and manual modes, engine load control, temperature control in the mixing chamber)

loading weight conveyor;

conveyor for unloading the mixture onto the rollers;

loading volume 70-75 kg

- **Roll Mill 1500/550 with (new) stop-blender FJ-1500;**

- **Extruder Bersdorf FF250 (strainer);**

- **New cooling machine XPJ-600**

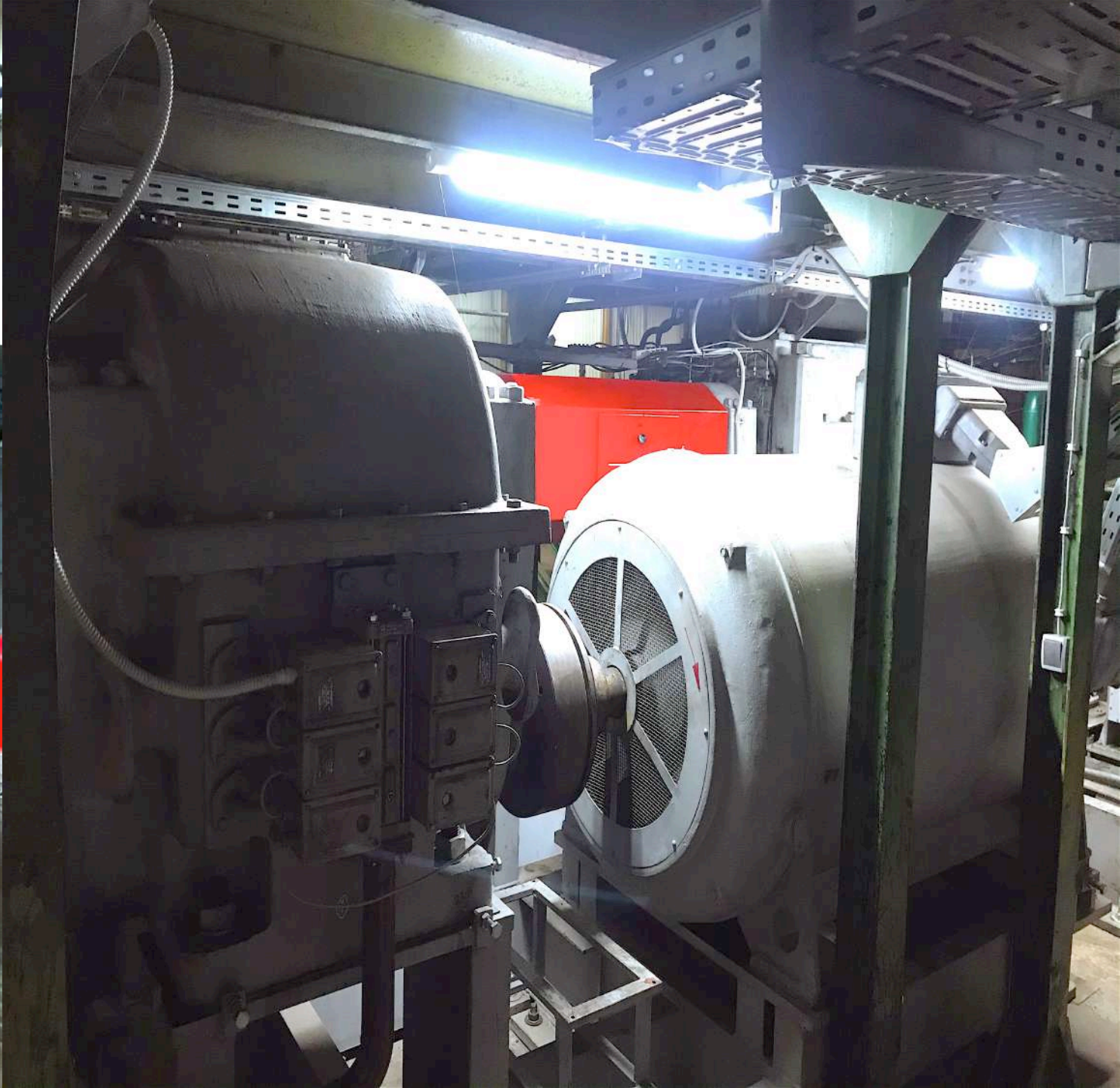
Mixer EKN-50















TRUSIDIMA

Technische Parameter

1.2.(5)
Ekn 50;

1.2.3. Schaltanordnung

Die Schaltanordnung besteht aus Niederspannungsschaltschrank und der Steuertafel, welche im Ventilschrank-Aufsatz (Steuerpult) montiert ist. Diese enthalten alle Schalt-, Steuer- und Registriergeräte für die Antriebsmotoren und der Steuerung des Stempelkneters.

Betriebsspannung	380 V \pm 10 %
Stromart	3 N ~
Betriebsfrequenz	50 Hz \pm 1 %
Anschlußwert	270 kW
Nennstrom	520 A
Versicherung	1000 A
Steuerspannung	220 V
Schutzgrad	IP 40

1.2.4. DS-Mufteranlasser

Typ:	DOLV 11 - 4
	Pn = 250 kW ta = 40 s
	u = 590 V h = 0,4/h
	I = 258 A n = 3
	Schwerlastanlauf
Motorantrieb:	220/380 V; 50 Hz
Steuerspannung	220 V
Schutzgrad	IP 54

Zu erwartende Wärmeabgabe an den Raum

- Kneter, Getriebe und Motoren	ca. 25 kW
- Schaltschrank Kneter	ca. 1 kW

Roll Mill
1500/550
with (new)
stop-blender
FJ-1500











Extruder Bersdorf FF250 (strainer);







-
- New cooling machine XPJ-600



Borovo Belt d.o.o.



Rubber feed is pressed into rubber sheet after plasticating or mixing. This cooler can coat, cool, dry rubber sheets which are of high temperature and then be folded into a pile.

2. Main Technical Parameters:

1. Adapted Max. Rubber Sheet Width.....600mm
2. Rubber Sheet Thickness.....4-12mm
3. Max. Hanging Rubber Sheet Length Hanging in Rod.....1200mm
4. Power Supply.....380V/50HZ
5. Sheet Access Conveyor Belts Max. Linear Speed.....3-31m/min
6. Distance of the hanging in rod.....100mm
7. Axial Flow Cooling Fan Power.....0.37KW
8. Axial Flow Cooling Fan Number.....8 sets
9. Control Mode.....PLC Automatic Control System
10. Total Length of Whole Machine.....About 8.5
11. Outlet temperature of the rubber sheet.....Room temperature + 5 °C