

MALCOM TD-3V / VL

SOLDER-PASTE PRINT INSPECTION

MALCOMTECH
INTERNATIONAL



AUTOMATIC 2-D & 3D PASTE PRINT INSPECTION
TO VERIFY YOUR PASTE PRINT QUALITY

MALCOM TD-3V / VL

SOLDER-PASTE PRINT INSPECTION

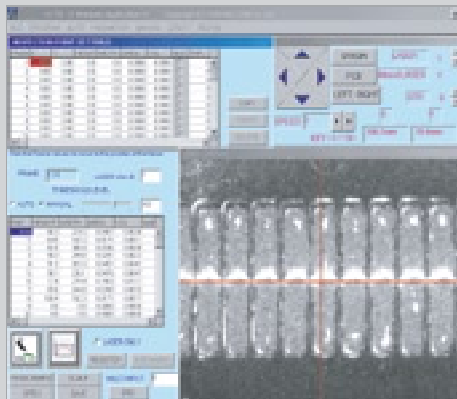
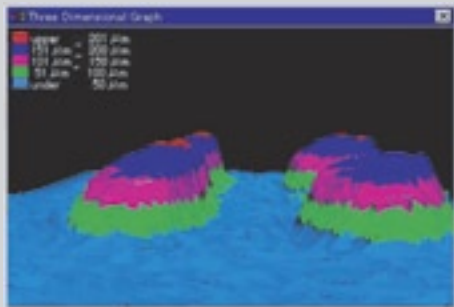
MALCOMTECH
INTERNATIONAL

SPECIFICATIONS:

Measurement Accuracy:	+/- .0003" (8µm)
Measurement Range:	.001 - .012" (25 - 300µm)
Approval/Rejection Function:	Automatically determines if paste meets user-specified standards.
Circuit Board Dimensions:	Min: 1.5 x 1.5" (40 x 40mm) TD-3V Max: 10 x 13" (250 x 300mm) TD-3VL Max: 16 x 18" (405 x 455mm) Thickness: 0.55~2.0mm
Light Source:	Red laser, 670nm
Camera:	CCD 0.3" 4x Magnification
Field of View:	0.17 x 0.12" (4.4 x 3.3mm)
Measurement Principal:	Slit-laser method; laser hits target at 45 degree angle.
Laser Classification:	Class 2 Slit-laser 20µm x 10mm
XY Tables:	Speed: 4.72"/sec (120mm/sec) max Repeatable Accuracy: +/- .0012" (30µm) One-Touch PCB clamping mechanism



3-D color profile of solder-paste volume



FEATURES & BENEFITS

- The TD-3 Automatic Paste Print Inspection System can measure printed solder paste height, width, area, and volume at up to 100 user specified locations.
- Automated X/Y movement insures accurate board to board comparisons of the same locations. After inspection, data can be viewed or printed as a table, graph, or color profile.
- The system is capable of performing automatic 3-D volume calculations of given locations. You get true 2-D and 3-D test graph and data.
- TD-3V provides Statistic Process Control Data, "SPC". In the SPC, the operator will see graphs, histogram, and data. All of this information comes from raw data collected in Auto Inspection Setting. Our SPC is very clear and user friendly. The operator is able to track the measurement of the individual pad.
- MS Windows operational program enables user to operate the system in step-by-step modes.
- Unlike other systems where guesswork is involved, the TD-3V insures repeatable, accurate measurements.
- Simple P.C.B. fixed holding bracket assures precision test positioning.
- Self-calibration software and fixture included.
- Test results can be stored to hard disk drive.
- Two(2) fiducial mark recognition, to measure the same print locations of multiple P.C.B. modules.
- Password protection and free software upgrade.

MALCOMTECH INTERNATIONAL

26200 Industrial Blvd. Hayward, CA 94545 tel. 510.293.0580 fax. 510.293.0940
info@malcomtech.com <http://www.malcomtech.com>