

# Skymen Ultrasonic cleaner

## Instruction Manual

Model : JTS-108GS

Please kindly read the manual carefully before operation.

### Safety Precautions

Before using your Ultrasonic Cleaner, please read and thoroughly understand these safety precautions. Failure to follow them may result in serious personal injury or property damage.

#### To avoid electrical shock:

- Do unplug from power source before filling or emptying the tank.
- Do keep the control panel and the area around the cleaner clean and dry -- wipe up solution which spills over the tank brim. Water and high voltage can cause electrical shock.
- Do not operate the cleaner without proper grounding.
- Do not remove the grounding prong on the line cord plug.
- Do not disassemble your cleaner -- high voltage inside the cleaner is dangerous.
- Do not immerse the cleaner in water.

#### To prevent personal and/or property damage:

Do not use the product under condition of :

Where temperature fluctuate strongly

Where it has high humidity and especially dew

Where vibration or shock is strong

Where corrosive gas or dust exist

Where water, oil or chemicals splash.

Where is easy to cause explosion.

- Do operate the cleaner with a vented cover or no cover.
- Do use water-based solutions.
- Do not ever use alcohol, gasoline or flammable solutions. Doing so could cause a fire or explosion and will void your warranty. Use only water-based solutions.
- Do not ever use mineral acids. These could damage the tank.
- Do not touch the stainless steel tank or cleaning solution -- they may be hot.
- Do not place your fingers or hands into the tank for a long time while the cleaner is operating. Doing so may cause discomfort and possible skin irritation.
- Avoid contact with solutions and provide adequate ventilation.
- Do not use solutions containing chlorine bleach

## Brief Introduction

Model	JTS-108GS
Capacity	525L
Inner tank size	1500X500X700mm
Tank material	SUS 304
Frequency	40Khz
Ultrasonic power	5400W
Heating power	9000W
Ultrasonic Timer:	1S to 99 hours
Heater	from room temperature to 99 °C;
Working voltage	380V/50HZ
Room temperature:	-10°C~40°C
Room humidity	35~85 %

## How to use the ultrasonic cleaner

1 Check the plate on the back of the cleaner for correct power requirements. Do not place the machine on a circuit which could become overloaded. If your cleaner does not operate correctly, first refer to the troubleshooting section for possible causes, or contact supplier.

2. Fill the tank with water over  $\frac{4}{3}$  line; put the cleaning items in , the cleaning appliance should immerse in the solvent fully .

Then and start power, Set up time and temperature.

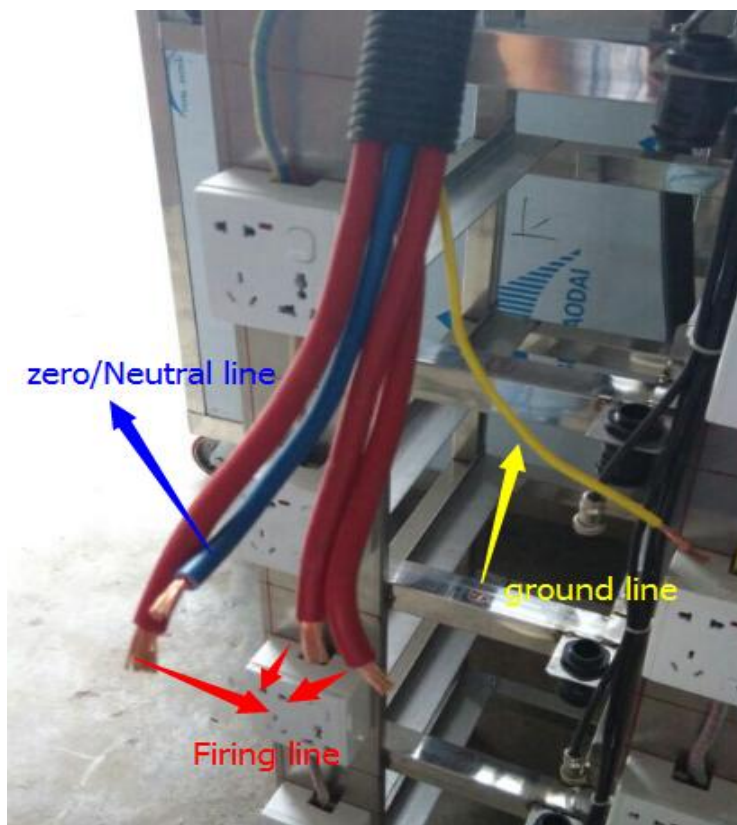
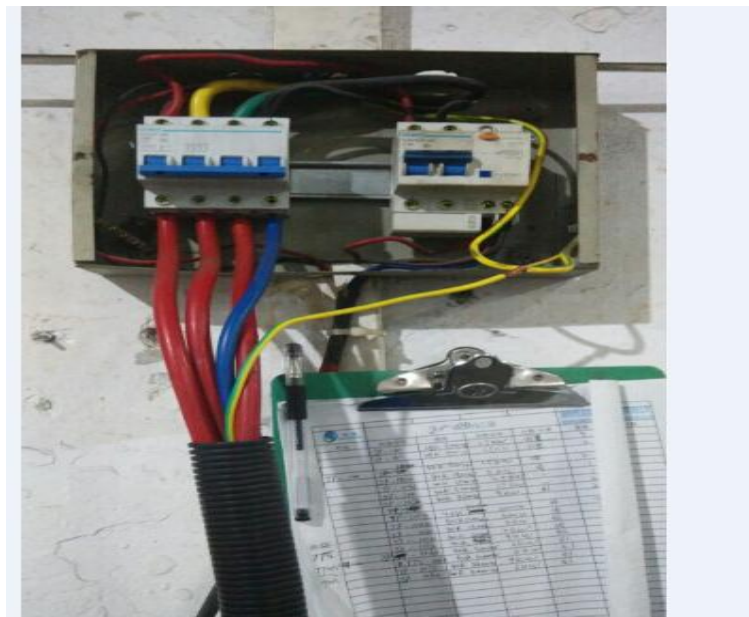
\*When you first fill your unit, or refill it with fresh solution, use warm water for the solution or turn on the heater (press the HEAT switch, if available), turn on the ultrasonic , closed the lid and the solution will heat quickly.

3. Plug the generators on strip

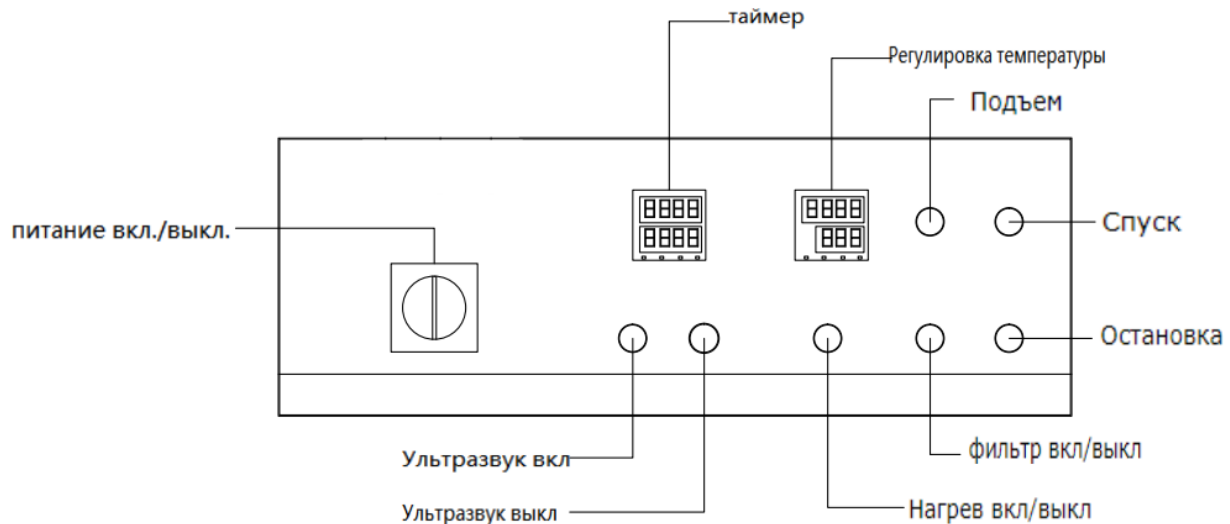
Power up the strip on 380V/50Hz

## 4. Machine main Power requirement

**electrical feed 3 Phases + 1 neutral + 1 ground**



## 5. Control panel:



**Red/green/yellow indicator:** it shows the running state of the 3 phase power supply, 3 phase power supply has 3 fire wires, a neutral wire and a ground wire. These three lights respectively represent the state of the three fire wires.

**Power on/off:** It's the general switch

**Timer:** It can adjust the working time of Ultrasonic

**Ultrasonic on:** It starts the ultrasonic

**Ultrasonic off:** It ends the ultrasonic

**Temperature controller:** It can adjust the temperature of water in tank

**Heating on/off:** It can start/end the heating function

**Rise:** The lifting system will lift the basket from tank

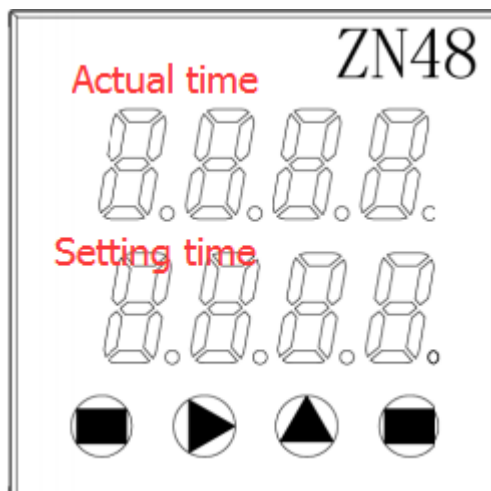
**Descend:** The lifting system will lower the basket into the tank

**Lifter stop:** Stop the lifting system when it's working

**Filtration on/off:** Let the filter run/stop.

### Time setting of Ultrasonic:

#### How to adjust ultrasonic cleaning time in ZN48?



1. Start the ultrasonic, the time relay(ZN48) also start to work.
2. Press the "▶", then press "▲", then cleaning time can be adjusted from 1 minute~99 minutes.

For example, if you want to set cleaning time in 35 minutes pls do as the following steps:

- a: Press ▶, 1<sup>st</sup> figure of setting time in ZN48 will flash
- b: Press ▲, for several times until the figure in 3
- c: Press ▶, 2<sup>nd</sup> figure of setting time in ZN48 will flash
- d: Press ▲ for several times until the figure in 5
- e: Press ▶, 3<sup>rd</sup> figure of setting time in ZN48 will flash
- d: Press ▲, for several times until the figure in 0
- f: Press ▶, 4th figure of setting time in ZN48 will flash
- g: Press ▲, for several times until the figure in 0

## Troubleshooting:

Item	Questions	Possible reasons	solutions
1	No ultrasonic	A、 Power supply not connect B、 Fuse broken C、 Cable short circuit D、 Transducer short circuit E、 Other reasons	1. Check and plug power switch 2. Check fitted power supply and fuse 3. Connect fitted cable or replace a new 4. Inquiry our after service engineer 5. Inquiry our after service engineer
2	Not well cleaning	A、 Not strong ultrasonic cleaning B、 Too high too low liquid surface C、 Too high too low temperature D、 Not suitable cleaning liquid E、 Other reasons	1. Connect ultrasonic button and adjust 2. Adjust liquid into the best surface 3. Adjust temperature into the most fitted 4. Stop and switch off power supply, replace suitable liquid after the previous liquid cool down. 5. Inquiry our after service engineer
3	No heating	A、 Heating power switch bad linkage B、 Fuse broken C、 Other reasons	1. Check heating plug to correct connect 2. Check outlet line with multimeter: if OK and resistance value is few hundreds then replace fuse. If not OK,it's short circuit, replace with a new heater. 3. Inquiry after service engineer
4	Temperature control failure	A、 Thermostat loosen B、 Thermostat tube broken C、 Other reasons	1. Fasten the thermostat header 2. replace thermostat 3. Inquiry our after service engineer
5	Timer control failure	A、 Timer knob out of control B、 Timer failure C、 Other reasons	1. Loosen or tighten the screw 2. Replace timer or digital panel 3. Inquiry our after service engineer
6	Electric leakage	A、 Customer side not grounded B、 Machine not grounded	1. To ensure grounded 2. Check if machine earth wire loosen
7	Other problems		Inquiry our after service engineer

## Optimizing Your Cleaner

- Tanks Cleaning - check the tank for contamination whenever you change solution. If necessary, remove contaminants with a nonabrasive cloth and water.
- Emptying - always unplug the cleaner before emptying the tank. Empty the solution into a waste disposal unit.
- Filling - always unplug the line cord before filling the tank. Fill the cleaner to the operating level (one inch from the top with beaker/tray in place), using warm tap water.
- Low solution level - will cause the cleaner to fail. When you remove heavy or bulky loads from the cleaner, the solution level may drop below the operating level. If so, be sure to replace lost solution and degas, if necessary, depending on the amount used.
- Overload - do not rest any items on the tank bottom. Weight on the tank bottom dampens sound energy and will cause damage to the transducer. Instead, use a tray and/or beaker positioning cover to support all items.
- Allow at least one inch between the tank bottom and the beaker or receptacle for adequate cavitation.
- Covers - allow the cleaner to heat up faster, to a higher temperature, and avoid excessive liquid evaporation. However, obstructing the cover vents will cause the cleaner to overheat.

### Warranty card:

ultrasonic cleaner			
Model		JTS-108GS	
Out-of-factory		<u>2023-3-13</u>	
Machine no.		DZ-2016001362	
Working volt		AC380V 50HZ	
Max power		5400+9000W	
Ultrasonic frequency		40KHz	
Maintenances record			
	Maintenance way	Replaced parts	P.I.C
01			
02			
03			