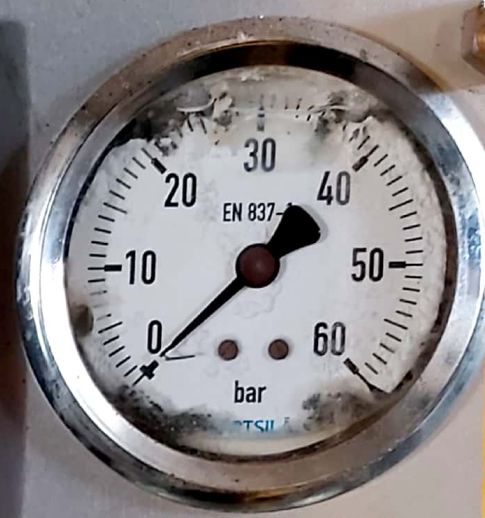




CHARGING AIR



STARTING AIR



LT - WATER



1 bar = 0,1 MPa ≈ 1 kp / cm<sup>2</sup>



HT - WATER



FUEL



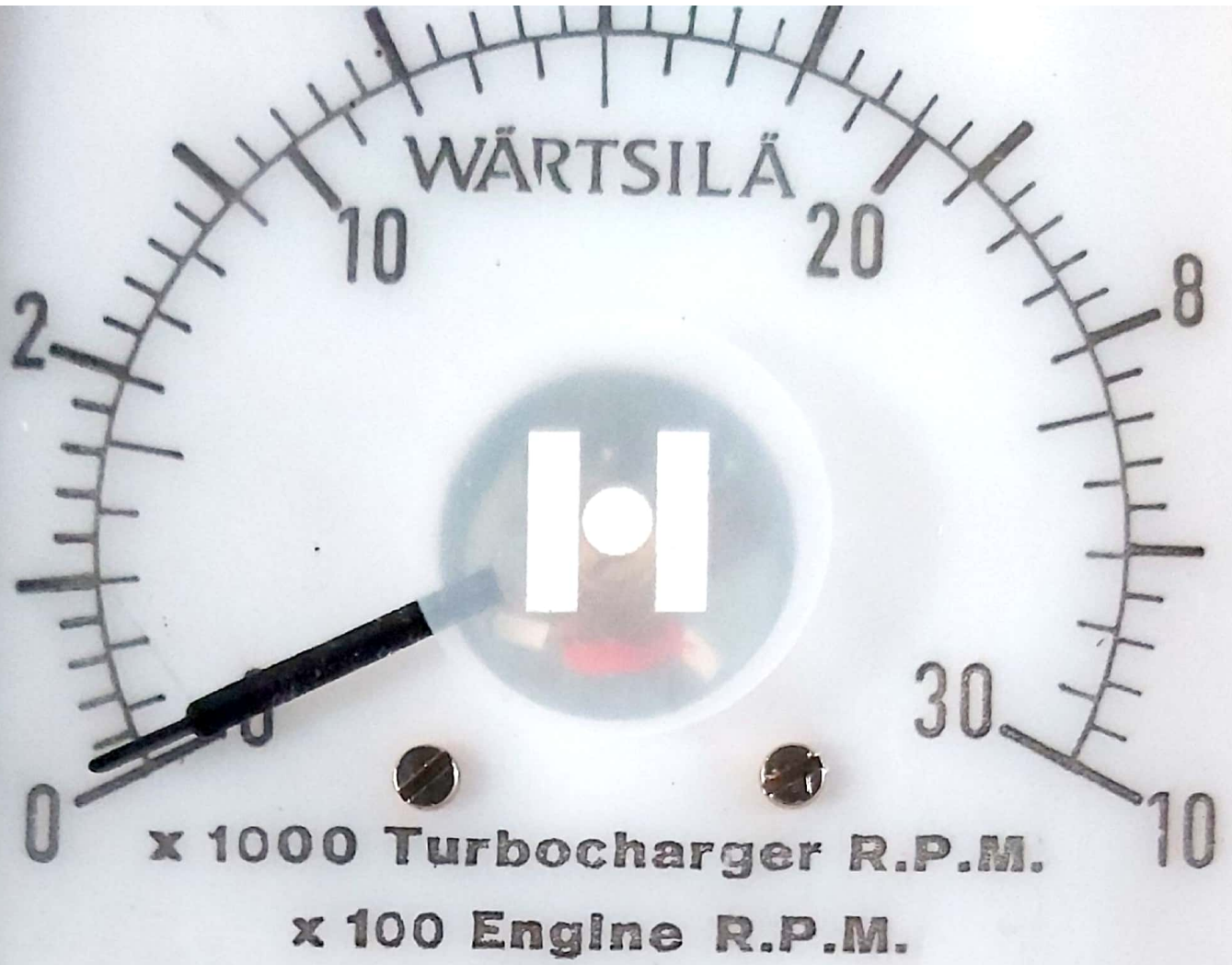
LUBRICATING OIL



x 1000 Turbocharger R.P.M.  
x 100 Engine R.P.M.

10106185 h

WÄRTSILÄ



0 1 0 6 1 8 5 h

15 102 ⊥ ☆



x 1000 Turbocharger R.P.M.  
x 100 Engine R.P.M.

10106185 h

Q 15 112 1 ☆