

aquamatçtürkiye

su ve atıksu arıtım • water and wastewater treatment

Adres : Çakmaklı Mah. 9.Cad. 139. Sk. No:4 344522
Kıraç, Büyükcçekmece / İstanbul
Tel : +90 (212) 886 31 63 (pbx)
Fax : +90 (212) 886 90 16
E-mail : denizsu@denizsu.com

PROJE NO / PROJECT NO : -
PROJE ADI / PROJECT NAME : -
CIZIM NUMARASI / DRAWING NO : EP 72B
PANO ADI / PANEL NAME : TFM
PANO OZELLIKLERI / PANEL PROPERTIES : 600x2000x500 / 1000x2000x500
REVIZYON NO / REVISION NO : 2012-00
PANO STOK KODU / PANEL STOCK CODE : ****

REV.NO/REV. NO	REV.YAPAN/REV. BY	CIZIM TARİHİ/DRAWING DATE	01/01/2011	ELEKTRİK PROJESİ / ELECTRICAL PROJECT	TFM	SAVFA AÇIKLAMA PAGE EXPLANATION	-
-	-	CIZEN/DRAWER	KEMAL GENIS	KONTROL PANOSU / CONTROL PANEL	TFM	TOPLAM SAYFA / SAYFA # TOTAL PAGE / PAGE #	14
2011-00	KEMAL GENIS	KONTROL/KONTROL STOK KODU/STOCK CODE	****				1

KRITİK GUVENLİK KURALLARI

- A**
- 1- PANO ENERJİLİ İKEN PANO KAPAĞINI AÇMAYINIZ !!!
 - 2- PANO İCERİSİNDE ÇALIŞMA YAPMADAN ÖNCE ENERJİ KESİLMELİ VE KONTROL KALEMİ VEYA AVOMETRE İLE ENERJİNİN GELMEDİĞİ DOĞRULANMALIDIR
 - 3- KABLO BAĞLANTILARI YAPILIRKEN KABLO PAPUCU KULLANILMALIDIR.
 - 4- PANO İCERİSİNDEKİ VIDALAMA UYGULAMALARINDA VIDANIN GEYSEK OLMAMASI GEREKLİDİR. GEYSEK BIRAKILAN VIDA BAĞLANTILARINDA ENERJİLİ KISIMLARDA İSİMA MEVDANIA GELİR.
 - 5- PANO İCERİSİNDEKİ VIDALAMA UYGULAMALARINDA VIDA FAZLA SIKILANMALIDIR. FAZLA SIKILAN VIDALARDA DİS ZEDELEMESİ VE DEFORME MEVDANIA GELİR.
 - 6- PANO İCERİSİNDE BULUNAN BARA KISMI KAPAKLIDIR. KAPAK ALTINDA YÜKSEK GERİLİM BULUNMAKTADIR. KAPALI OLAN KISIMLAR KESİNLİKLE AÇILMAMALIDIR. ELLE YAPILABİLECEK TEMAS VEYA MUDALELER SONUÇ OLUM TEHLİKESİ BULUNMAKTADIR. PANO ENERJİSİ ANA SALTERDEN KESİLMELİ KONTROL KALEMİ VEYA AVOMETRE İLE ENERJİNİN GELMEDİĞİ DOĞRULANMALIDIR. **[DİKKAT]**
 - 7- PANOLAR KESİNLİKLE TOPRAKLANMALIDIR. TOPRAKLAMA İSLEMİ PANO İCERİSİNDEKİ BULUNAN SARI-YESİL RENKTE OLAN KLEMENSİLERE BAĞLANTI YAPILABİLİR.
 - 8- PROJELERDE İFADE EDİLEN (L1, L2, L3) İSARETLERİ ENERJİ KABLOLARINI İFADE EDER. (N) NOTR, (PE) TOPRAK HATLARINI GOSTERMEKTEDİR. ENERJİ, NOTR VE TOPRAK KABLOLARI ARASINDA KESİNLİKLE KOPRULEME YAPILMAMALIDIR
 - 9- SİSTEMDE VEYA PANODA OLABİLECEK AÇIL DURUMLAR DİŞİNDE PANO ÜZERİNDE BULUNAN AÇIL STOP BUTONU KULLANILMAMALIDIR. TEHLİKE ARZ ETMEYEN DURUMLARDA SİSTEMİN ÇALIŞTIRILMASI VE DURDURULMASI NORMAL BUTONLAR İLE YAPILMALIDIR.
 - 10- PANO İCERİSİNDE BULUNAN KABLOLAR RENKLERİNİ AÇILAMASI AŞAĞIDADIR:
KIRMIZI : + 24 VDC ENERJİLİ İFADE EDER. PLC DE ÇIĞIPTI ÇIKIŞI OLARAKTA KULLANILIR.
MAVİ : - 24 VDC ENERJİLİ İFADE EDER.
SARI : PLC İNPUT GİRİŞLERİNİ İFADE EDER.
 - 11- L1,L2,L3 : TEK FAZDA 220 VAC 50HZ, FAZ FAZ ARASI 380 VAC 50HZ ENERJİ TAŞIMASINDA KULLANILMIŞTIR. BEYAZ : NOTR BAĞLANTILARINDA KULLANILMIŞTIR.
 - 11- PANO KAPAĞINDA KULLANILAN LAMBA VE BUTONLARIN RENK AÇIKLAMASI AŞAĞIDADIR:
0-1 ANAHTAR : ANAHTARLAMA VE AÇMA KAPAMA İSLEMLERİ İÇİN KULLANILIR.
1-0-2 ANAHTAR : ANAHTARLAMA VE AÇMA KAPAMA İSLEMLERİ İÇİN KULLANILIR.
KIRMIZI MANTAR BUTON : AÇIL STOP BUTONU OLARAK KULLANILIR.
SARI BASHMA BUTONU : ADMİ ATLATALMALARDA VE LAMBA TEST BUTONU OLARAK KULLANILIR.
KIRMIZI BASHMA BUTONU : SİSTEM STOP BUTONU OLARAK KULLANILIR.
YESİL BASHMA BUTONU : SİSTEM START BUTONU OLARAK KULLANILIR.
SİYAH BASHMA BUTONU : SİSTEM ALARM RESET BUTONU OLARAK KULLANILIR.
YESİL LAMBA : SİSTEM DEVRGEDE, EKİPMANLARIN SERVİSTE VEYA ÇALIŞIYOR BİLGİSİNİ İFADE EDER
KIRMIZI LAMBA : SİSTEM VEYA EKİPMANLARIN ARIZA BİLGİSİNİ İFADE EDER.
SARI LAMBA : SİSTEME AIT DURUM BİLGİSİNİ İFADE EDER.
 - 12- YANGIN ENŞANSINDA PANO İCERİSİNDE SU ATILMAMALIDIR. ANA ENERJİ KESİLMELİ VE YANGIN SONDURME TUĞU KULLANILMALIDIR.

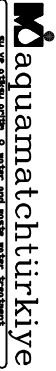
- B**
- C**
- D**
- E**
- F**
- G**

ELECTRICAL SAFETY AND PRECAUTIONS

- A**
- 1- THE CONTROL PANEL DOOR SHALL BE KEPT LOCKED DURING OPERATION. DO NOT OPEN THE CONTROL PANEL'S DOOR WHEN THE PANEL IS ENERGIZED.!
 - 2- THE CIRCUITS AND EQUIPMENT TO BE WORKED ON SHALL BE DISCONNECTED FROM ALL ENERGY SOURCES AND MUST BE VERIFIED THERE ISN'T ENERGY IN THE PANEL BY USING A MULTIMETER.
 - AND ALL ELECTRICAL TROUBLESHOOTING OR SERVICES MUST BE PERFORMED BY A QUALIFIED ELECTRICIAN OR AQUAMATCH SERVICE PERSON.
 - 3- ALL THE WIRES SHALL BE CONNECTED END FERRULES WITH PLASTIC COLLARS. IT DENOTED THE CREATION OF A HOMOGENOUS, PERMANENT CONNECTION BETWEEN THE CONNECTING ELEMENT.
 - 4- IT SHALL BE VERIFIED ALL FIELD WIRING TO ENSURE TERMINAL CONNECTIONS ARE TIGHT AND CORRECT.
 - 5- NEVER TOUCH ELECTRICAL EQUIPMENT WHILE STANDING ON A DAMP OR WET SURFACE.
 - ALL THE SCREWS ON THE CONTROL PANELS SHALL BE TIGHTENED FIRMLY.
 - 6- THE HIGH VOLTAGE BUSBARS SYSTEM IN THE CONTROL PANELS ARE COVERED, NEVER REMOVE THE COVER PLATES OR ACCESSORIES WHILE THE PANEL IS ENERGIZED.
 - 7- ALL ELECTRICALLY OPERATED PANELS SHALL BE EFFECTIVELY GROUNDED. THE YELLOW-GREEN COLORED TAG/TERMINAL IN THE CONTROL PANEL SHALL BE USED FOR GROUND CONNECTION .
 - AND NEVER TOUCH THE LIVE BUSBARS; TOUCHING EXPOSED, ENERGIZED LINES/EQUIPMENTS COULD RESULTS IN SERIOUS INJURY OR DEATH.!
 - 8- THE L1, L2, L3 LINES IN ELECTRICAL DRAWINGS INDICATES THE HIGH VOLTAGE LINES. (N) IS NEUTRAL; (PE) IS GROUND/EARTH CONNECTION.
 - 9- NEVER GET A BRINDGING CONNECTIONS BETWEEN PHASES, NEUTRAL, AND GROUND CONNECTIONS.
 - 10- THE MUSHROOM TYPE EMERGENCY STOP BUTTION ON THE CONTROL PANEL FRONT SHALL BE USED ONLY IN EMERGENCY CONDITIONS.
 - OTHERWISE IT SHALL BE USED THE CONTROL BUTTONS TO OPERATE/STOP THE SYSTEM.
 - 11- ELECTRICAL WIRES ARE COLOR CODED TO PREVENT WIRING ERRORS. THE EXPLONATION OF THE COLORS ARE GIVEN BELOW:
RED CABLES ARE USED FOR CONNECTIONS OF + 24V DC SUPPLY, AND ALSO USED FOR OUTPUT CONN. OF PLC MODULES
BLUE CABLES ARE USED FOR CONNECTIONS OF - 24V DC SUPPLY
YELLOW CABLES ARE USED FOR INPUT CONNECTION OF PLC MODULES
 - 12- L1, L2, L3 : THE LINE VOLTAGE VALUE IN A SINGLE PHASE IS 215-230 VAC @ 50-60 Hz; THE VOLTAGE BETWEEN THE PHASES IS 380-415 V AC @ 50-60 Hz.
WHITE CABLES ARE USED FOR NEUTRAL CONNECTIONS.
 - 13- THE EXPLONATION OF THE LAMPS AND BUTIONS IN THE FRONT OF CONTROL PANEL ARE GIVEN BELOW:
0-1 SELECTOR SWITCH : IT IS USED FOR ON/OFF OPERATION.
 - 14- RED MUSHROOM PUSHBUTTON : IT IS USED FOR EMERGENCY STOP
 - YELLOW FLUSH PUSHBUTTON: IT IS USED FOR STEPPING FORWARD ON OPERATION, AND IT IS USED AS LAMP TEST BUTTON.
 - RED FLUSH PUSHBUTTON : IT IS USED AS SYSTEM STOP BUTTION
 - GREEN FLUSH PUSHBUTTON : IT IS USED AS SYSTEM START BUTTION
 - BLACK FLUSH PUSHBUTTON : IT IS USED AS ALARM RESET BUTTION
 - GREEN LAMP : IT IS USED TO INDICATE RUNNING/WORKING STATUS OF THE EQUIPMENTS ON THE SYSTEM
 - RED LAMP : IT IS USED TO INDICATE FAULT STATUS OF THE EQUIPMENTS ON THE SYSTEM
 - ORANGE LAMP : IT IS USED TO INDICATE WARNING STATUS OF THE EQUIPMENTS ON THE SYSTEM
 - 15- NEVER USE WATER ON AN ELECTRICAL FIRE. YOU CAN USE ONLY A "CLASS C" FIRE ESTINGUISHER ON AN ELECTRICAL FIRE.

- B**
- C**
- D**
- E**
- F**
- G**

REV.NO/REV. NO	REV.YAPAN/REV. BY	CİZİM TARİHİ/DRAWING DATE	01/01/2011	KEMAL GENİS	KEMAL GENİS	KONTROL/CONTROL	İLER AKBAS	*****	KONTROL PANOSU /CONTROL PANEL	TFM	SAVFA AÇIKLAMAMA PAGE EXPLANATION	-	TORLAMA SAYFA / SAYFA # TOTAL PAGE / PAGE #	14	2
2011-00		KEMAL GENİS													

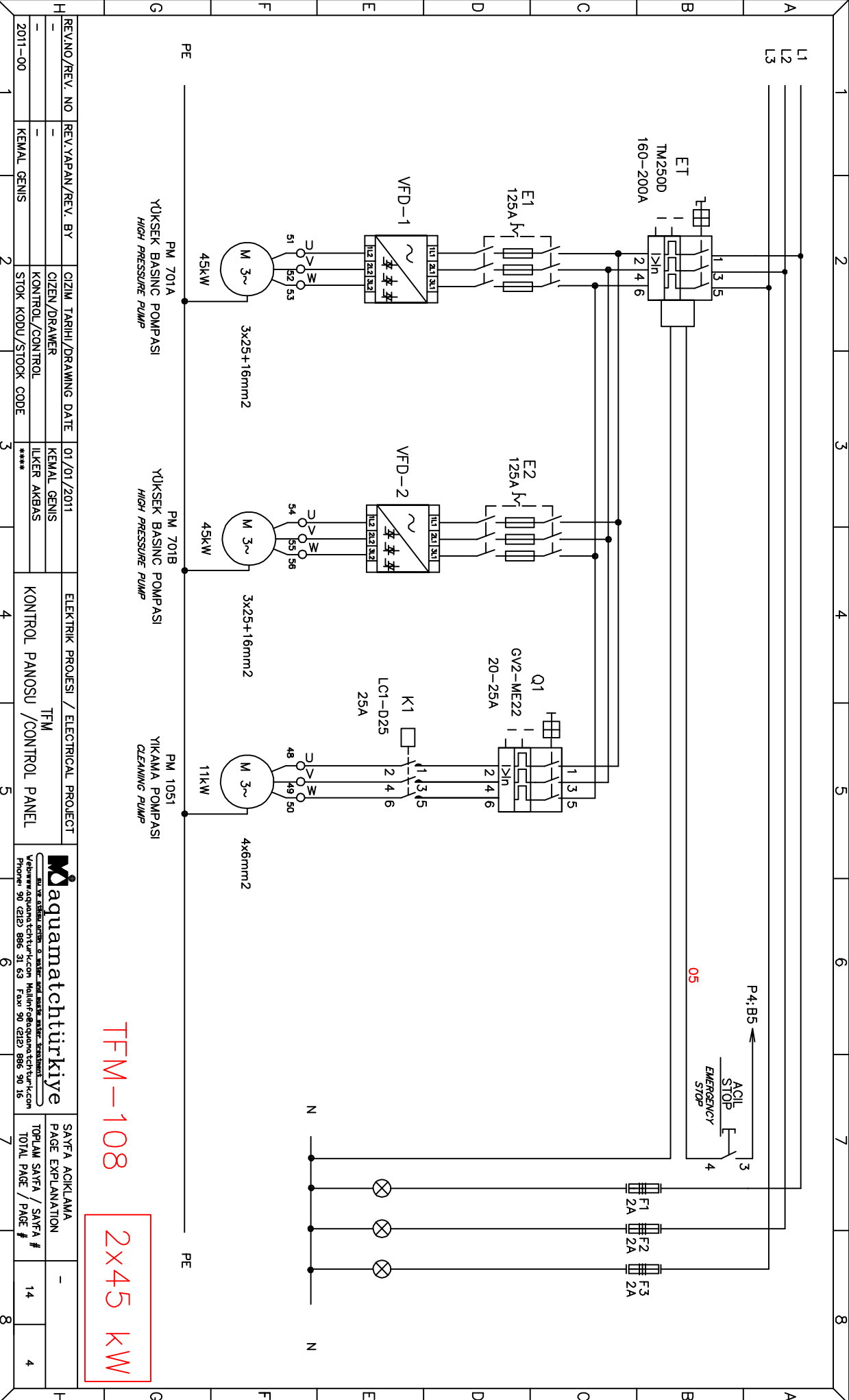


Yenişehir Mahallesi, 2. Sokağın 2. Katında, 34090 Beşiktaş/İstanbul
 Yabancı Dil: İngilizce, Türkçe, Almanca, Rusça, Fransızca
 Telefon: 90 (212) 886 31 63 Fax: 90 (212) 886 90 16

ACIKLAYICI BILGI :

SEMBOOLLER : SYMBOL :	TANIMLAMA : DESCRIPTION :	SEMBOOLLER : SYMBOL :	TANIMLAMA : DESCRIPTION :	SEMBOOLLER : SYMBOL :	TANIMLAMA : DESCRIPTION :	SEMBOOLLER : SYMBOL :	TANIMLAMA : DESCRIPTION :
	CAM SIGORTA 2 AMPER		VOLTAJ TARAFUSU VOLTAGE TRANSFORMER		GUC KONTROL PANOSU POWER DISTRIBUTION BOARD		24 VOLT BESLEME KAYNAGI 24 VDC POWER SUPPLY
	OTOMATIK SIGORTA 6 AMPER 1 FAZ		THERMAL-MAGNETIC CIRCUIT BREAKER LEKMEGE-CURRENT CIRCUIT BREAKER		FAN		P L C
	OTOMATIK SIGORTA 2 AMPER 2 FAZ		KACAK AKIM SALTERI LEKMEGE-CURRENT CIRCUIT BREAKER		TORRAKLAMA EARTY		LOGO 1
	OTOMATIK SIGORTA 40 AMPER 3 FAZ		KONTAKTOR CONTACTOR		3 PHASE, NEUTRAL AND PROTECTIVE CONDUCTOR		ILETKENLIK ANALIZORU CONDUCTIVITY ANALYZER
	NORMALDE AGIK KONTAK NO CONTACT		ELEKTRIK SALTERI CIRCUIT BREAKER		KAPALI AGIK 0-1 ANAHTAR OFF ON BUTTON		DEBI SAYYACI FLOW METER
	NORMALDE KAPALI KONTAK NO CONTACT		FIS PRIZ SOCKET PLUG CONNECTION		BASMA BUTONU PUSHBUTTON		OPERATOR PANEL
	BOBIN COIL		SOKULEMEYEN BAGLANTI WIRELS POWER POINT		SERVISTE VEYA DEVIKREDE LAMBASI ENERGRED LAMP		SELENOID VANA SELENOID VALVE
	FASOR KORNA FLASOR HORN		SOKULEBLUR BAGLANTI CONNECTION POINT		ARIZADA VEYA DEVIKREDE DISI LAMBASI FAULT LAMP		
	ANA KUMANDA AC/KAPA SALTERI CIRCUIT BREAKER		1 FAZ ELEKTRIK MOTOR ELECTRICAL MOTOR		SISTEM BILGI LAMBASI INFORMATION LAMP		
	KOMPAK ANA KUMANDA SALTERI MOULDED CASE CIRCUIT BREAKER		3 FAZ ELEKTRIK MOTOR ELECTRICAL MOTOR		YUMUSAK YOL VERICI SOFTSTARTER		

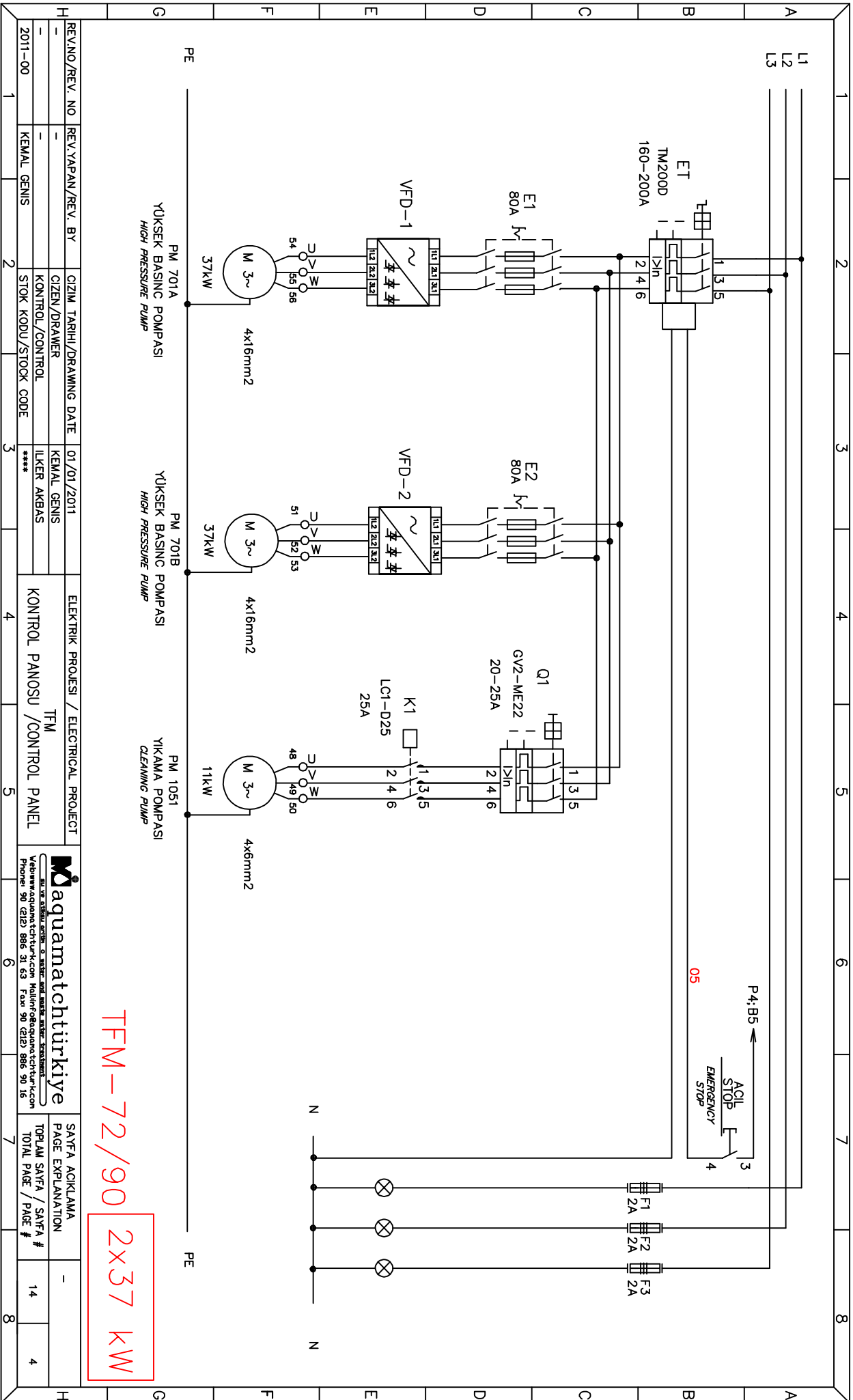
REVNO/REV. NO	REV.YAPAN/REV. BY	CIZIM TARİHİ/DRAWING DATE	KEMAL GENIS	01/01/2011	ELEKTRİK PROJESİ / ELECTRICAL PROJECT				
-	-	CİZEN/DRAWER	KEMAL GENIS		TFM				
2011-00	KEMAL GENIS	KONTROL/CONTROL	ILKER AKBAS	****	KONTROL PANOSU / CONTROL PANEL				
1	2	3	4	5	6	7	8		
<p>Yahşın Yılmazlar Elektrik ve Enerji Sistemleri Website: www.aquamatchturkiye.com, Mail: info@aquamatchturkiye.com Phone: 90 (212) 886 31 63 Fax: 90 (212) 886 90 16</p>						SAYFA ACIKLAMA PAGE EXPLANATION	-		
						TORLAM SAYFA / SAYFA # TOTAL PAGE / PAGE #	14		
									3



TFM-108

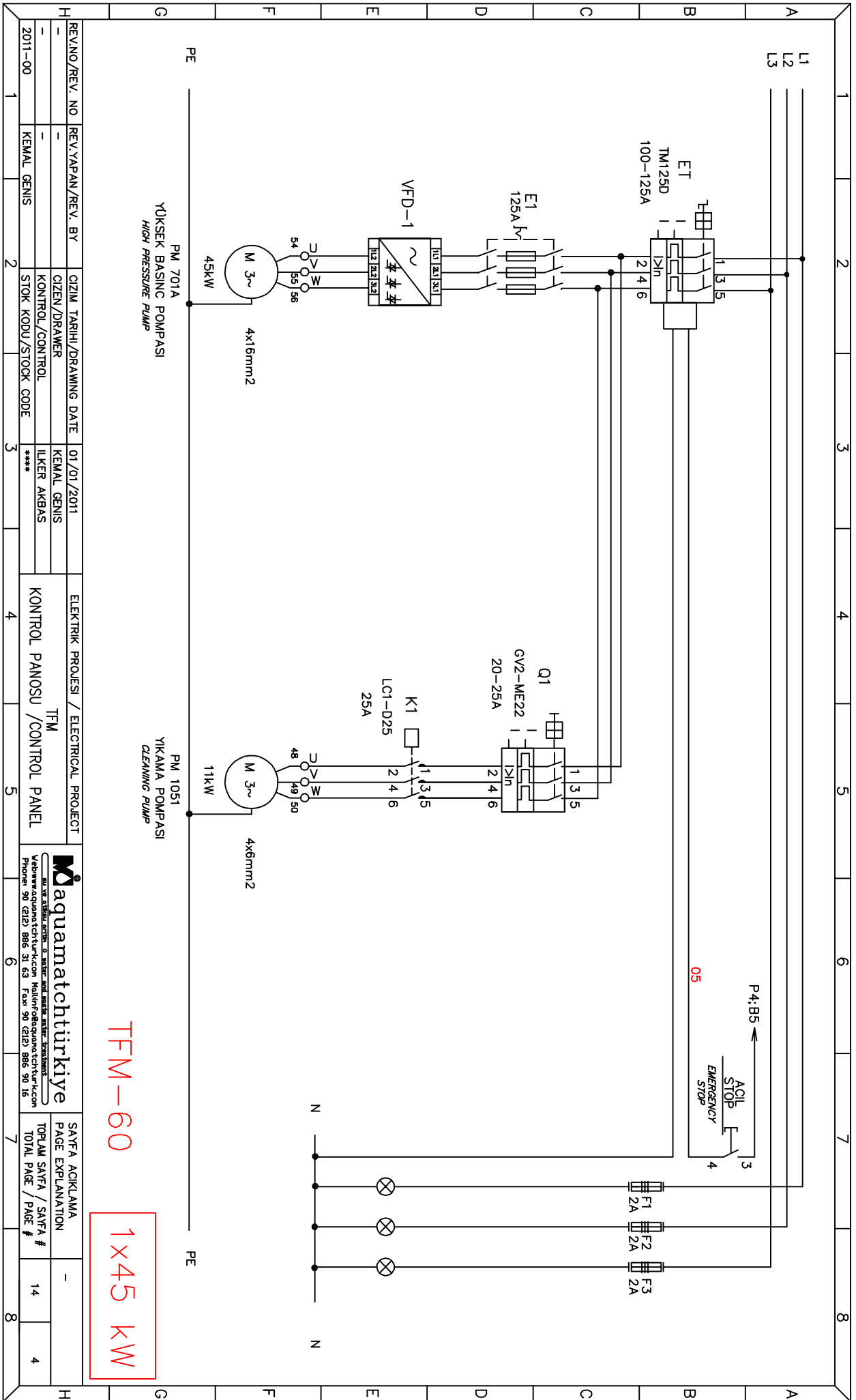
2x45 kW

REVNO/REV. NO	REV.YAPAN/REV. BY	CIZIM TARİHİ/DRAWING DATE	KEMAL GENİS	ELEKTRİK PROJESİ / ELECTRICAL PROJECT	TFM	 AQUAMATCH TÜRKİYE 31100 ÇİĞİRCİLER MAHALLESİ, 2. KAT, 34100 KATILIMCI MAHALLESİ Yalova/Edirne/İstanbul/Kocaeli Phone: 90 (212) 886 31 63 Fax: 90 (212) 886 90 16	SAYFA AÇIKLAMA	-	14	4
-	-	CİZEN/DRAWER	KEMAL GENİS	KONTROL PANOSU / CONTROL PANEL	TOTAL SAYFA / SAYFA #					
2011-00	KEMAL GENİS	KONTROL/CONTROL	STOK KODU/STOCK CODE	4	5	6	7	8		



TFM-72/90 2x37 kW

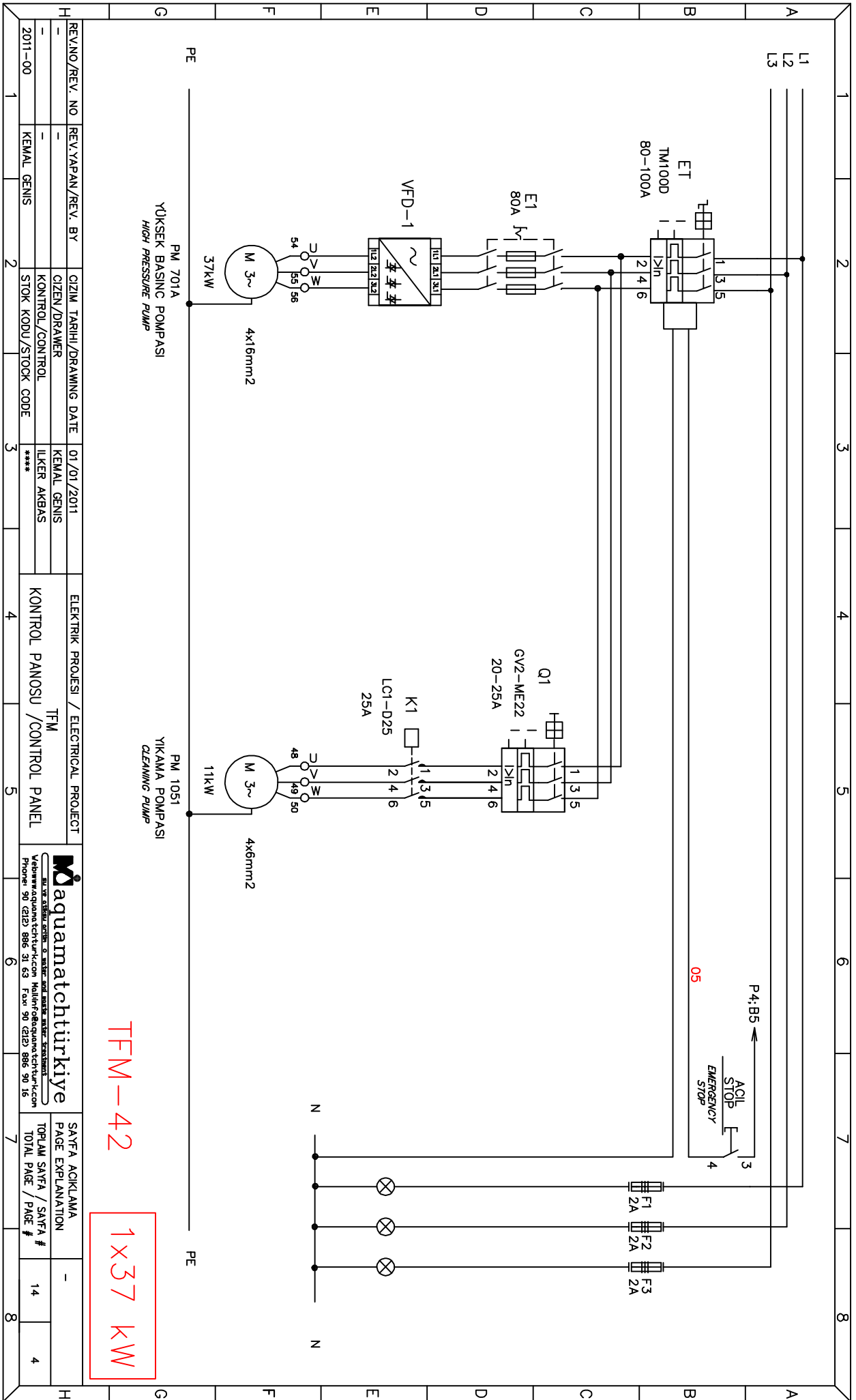
REV.NO/REV. NO	REV.YAPAN/REV. BY	CIZIM TARİHİ/DRAWING DATE	01/01/2011	ELEKTRİK PROJESİ / ELECTRICAL PROJECT	TFM	 aqumatchtürkiye Elektrik ve Enerji Sistemleri Yalova'da kurulum yaptığımız şirketler için Phone: 90 (212) 886 31 63 Fax: 90 (212) 886 90 16	SAYFA AÇIKLAMA	-	14	4
-	-	CİZİM/DRAWER	KEMAL GENİS	KONTROL PANOSU / CONTROL PANEL	KONTROL KODU / STOCK CODE		TOPLAM SAYFA / SAYFA #			
2011-00	KEMAL GENİS	KONTROL/CONTROL	ILKER AKBAS	KONTROL PANOSU / CONTROL PANEL	KONTROL KODU / STOCK CODE	*****	TOTAL PAGE / PAGE #	-	14	4



TFM-60

1x45 kW

REV.NO/REV. NO	REV.YAPAN/REV. BY	CIZIM TARİHİ/DRAWING DATE	ELEKTRİK PROJESİ / ELECTRICAL PROJECT		 AQUAMATCH TÜRKİYE YATIRIMCI VE MÜHÜRLEME VE MONTAJ VE KURULUM VE YERLEŞTİRME Yatırımcı ve Mühürleme ve Kurulum ve Yerleşme Phone: 90 (0)212 886 31 63 Fax: 90 (0)212 886 90 16	SAYFA AÇIKLAMA	PAGE EXPLANATION	-
-	-	CİZEN/DRAWER	KONTROL PANOSU / CONTROL PANEL			TOPLAM SAYFA / SAYFA #		
2011-00	KEMAL GENİS	KONTROL/KONTROL	ILKER AKBAS	TFM	TOTAL PAGE / PAGE #	4		



TFM-42

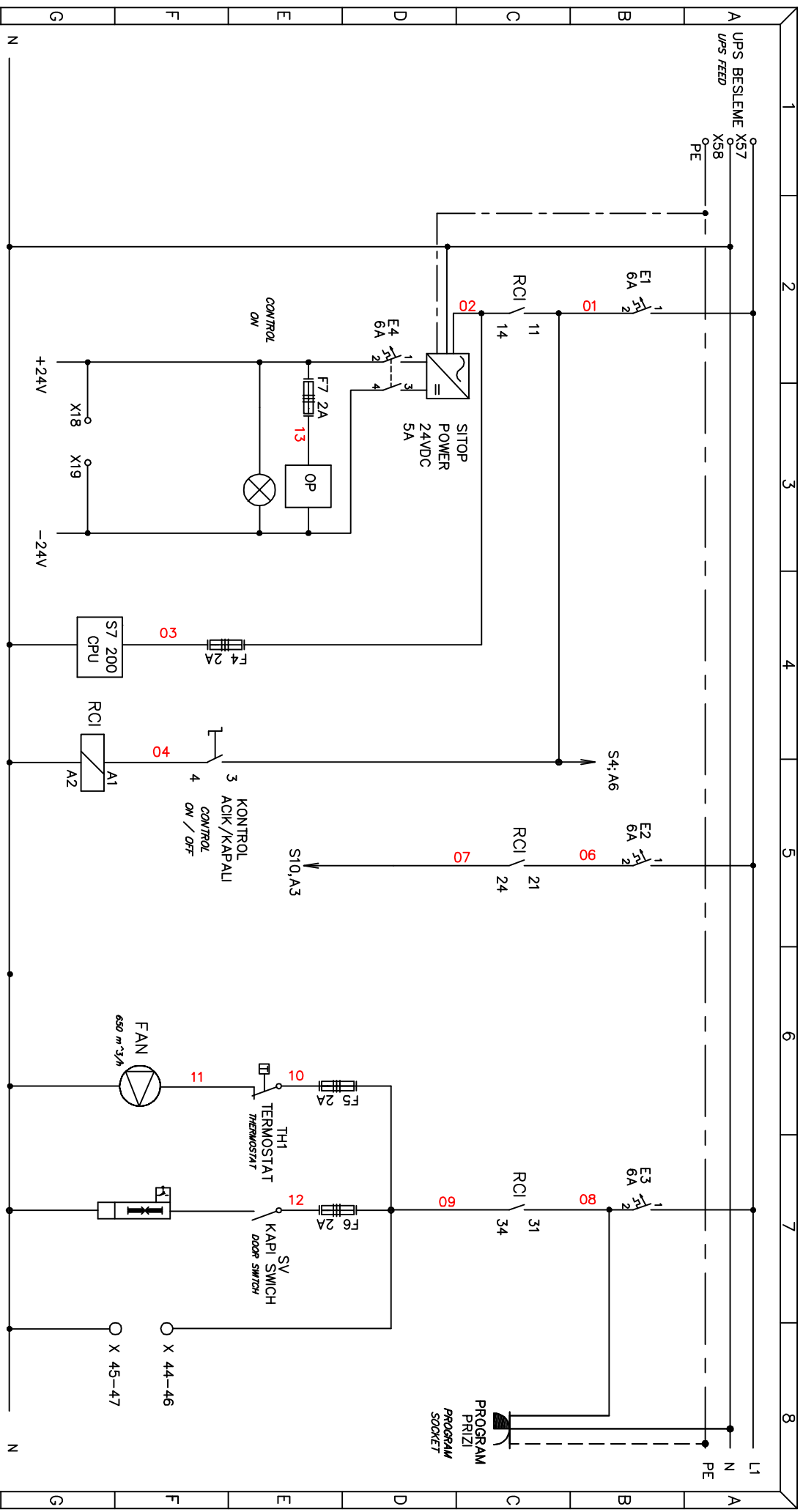
1x37 kW

REV.NO/REV. NO	REV.YAPAN/REV. BY	CIZIM TARİHİ/DRAWING DATE	ELEKTRİK PROJESİ / ELECTRICAL PROJECT		KONTROL PANOSU / CONTROL PANEL		SAVFA AÇIKLAMA PAGE EXPLANATION	
-	-	01/01/2011	TFM		KONTROL PANOSU / CONTROL PANEL		-	
2011-00	KEMAL GENİS	****	KONTROL PANOSU / CONTROL PANEL		KONTROL PANOSU / CONTROL PANEL		14	
1	2	3	4	5	6	7	8	4

PM 701A
YÜKSEK BASINÇ POMPASİ
HIGH PRESSURE PUMP

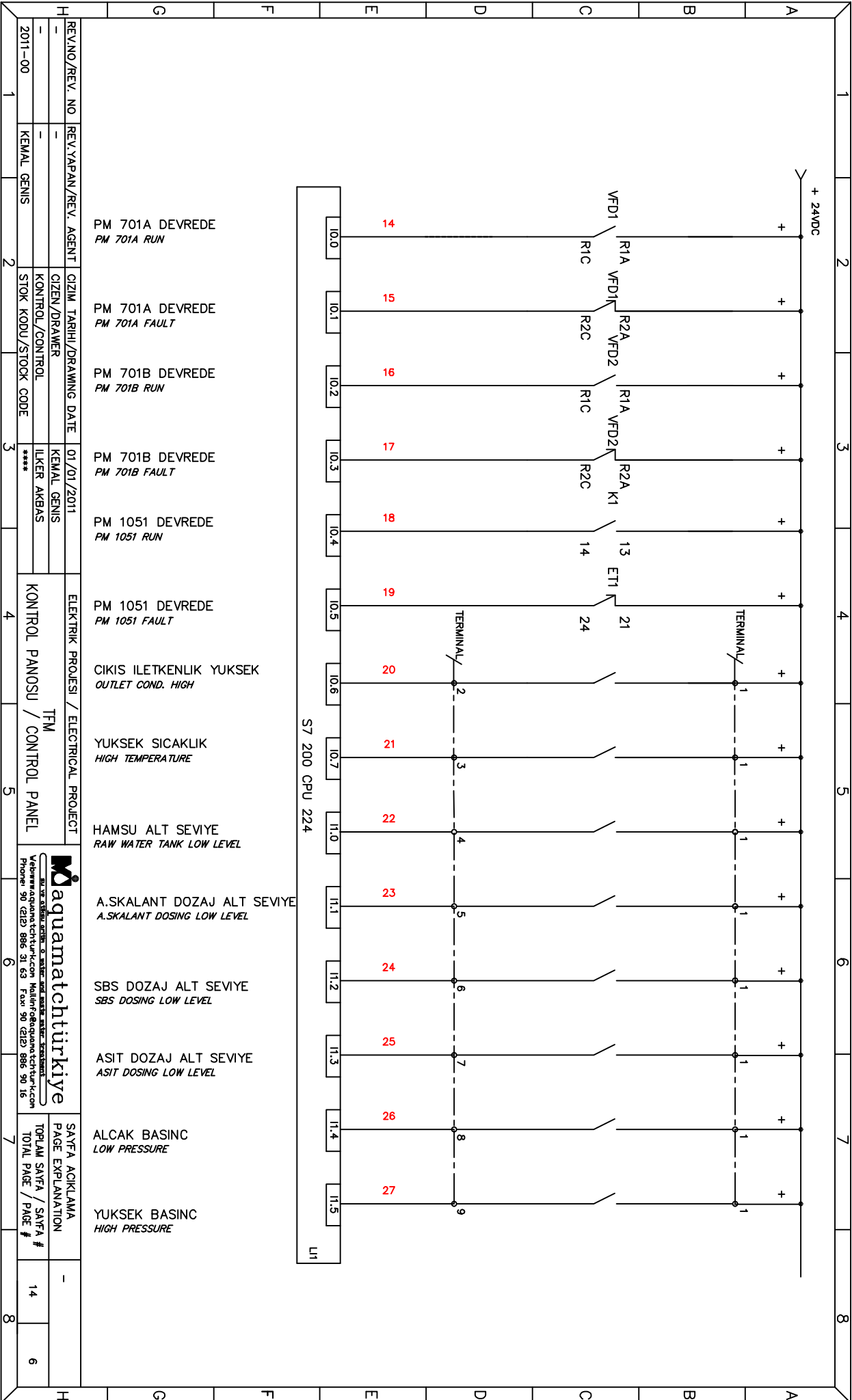
PM 10S1
YIKAMA POMPASİ
CLEANING PUMP

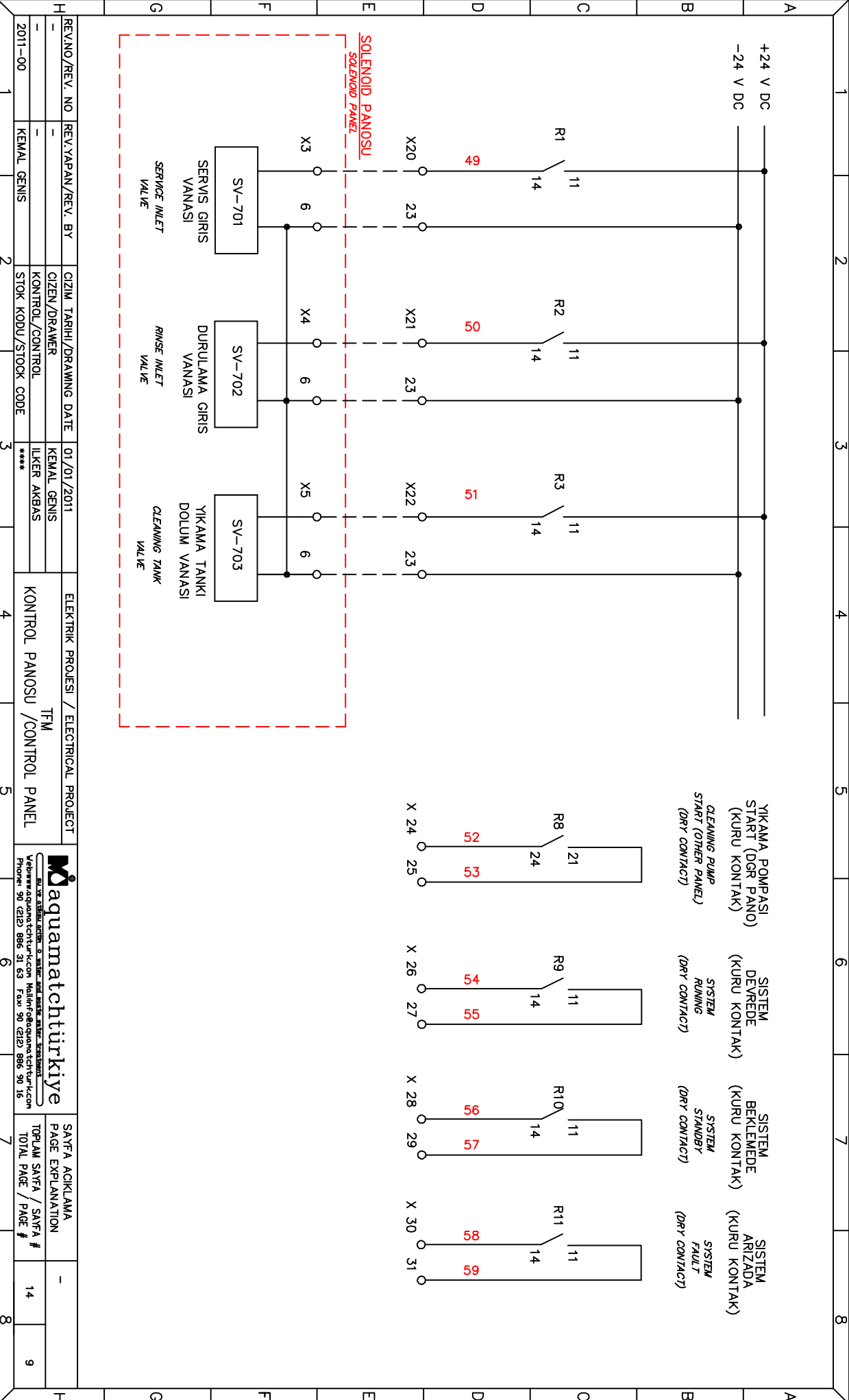
AQUAMATCH TÜRKİYE
 Yalova'da suyun temizliğini ve sağlığını garanti altına alan teknoloji.
 Yalova@aquamatchturkiye.com | Milli@aquamatchturkiye.com
 Phone: 90 (212) 886 31 63 | Fax: 90 (212) 886 90 16



REV.NO/REV. NO	REV.YAPAN/REV. BY	CIZIM TARİHİ/DRAWING DATE	01/01/2011	ELEKTRİK PROJESİ / ELECTRICAL PROJECT	KONTROL PANOSU / CONTROL PANEL	SAFHA AÇIKLAMA PAGE EXPLANATION	-
-	-	CİZEN/DRAWER	KEMAL GENİS	TFM		TORLAM SAFHA / SAFHA #	15
2011-00	KEMAL GENİS	KONTROL/KONTROL	ILKER AKBAS			TOTAL PAGE / PAGE #	5
1	2	3	4	5	6	7	8

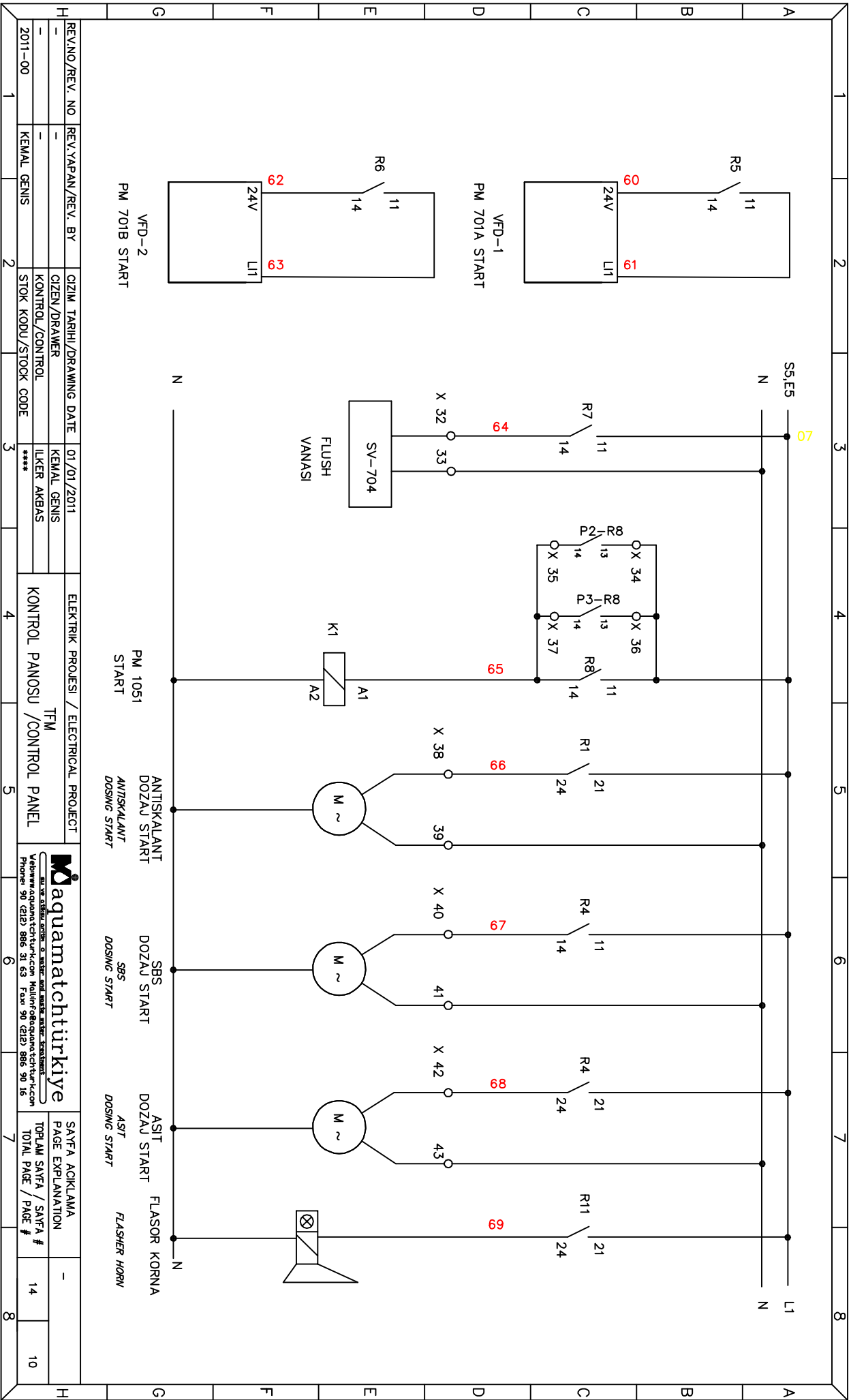
aquamatchtürkiye
 Elektrik Projesi ve Kontrol Sistemleri
 Web: www.aquamatchturkiye.com
 Telefon: 90 (212) 886 31 63 Fax: 90 (212) 886 90 16





REVNO/REV. NO	REV.YAPAN/REV. BY	CIZIM TARİHİ/DRAWING DATE	KEMAL GENIS	ELEKTRİK PROJESİ / ELECTRICAL PROJECT	TFM	KONTROL PANOSU / CONTROL PANEL	
-	-	CIZEN/DRAWER	KEMAL GENIS	01/01/2011	KEMAL GENIS	KONTROL PANOSU / CONTROL PANEL	
2011-00	KEMAL GENIS	KONTROL/CONTROL	ILKER AKBAS	****	KONTROL PANOSU / CONTROL PANEL		14
1	2	3	4	5	6	7	8
SAVFA AÇIKLAMA / PAGE EXPLANATION							14
TOPLAM SAYFA / SAFTA #							9

aquamatchturkiye
 www.aquamatchturkiye.com
 Yelkenyolu cad. No: 21 Kat: 2 Beşiktaş / İstanbul / Türkiye
 Phone: 90 (212) 886 31 63 Fax: 90 (212) 886 90 16



REVNO/REV. NO	REV.YAPAN/REV. BY	CIZIM TARİHİ/DRAWING DATE	ELEKTRİK PROJESİ / ELECTRICAL PROJECT	SAVFA AÇIKLAMA PAGE EXPLANATION	
-	-	01/01/2011	TFM	-	
2011-00	KEMAL GENIS	KEMAL GENIS LKER AKBAS	KONTROL PANOSU / CONTROL PANEL	TORLAM SAYFA / SAYFA # TOTAL PAGE / PAGE #	14
		STOK KODU/STOCK CODE			10

aquamatchturkiye
 20 YILIN EN İYİ SU ARITMA VE SUYU KLORİNE ETME VE SUYU KLORİNE ETME VE SUYU KLORİNE ETME
 Web: www.aquamatchturkiye.com, Telefon: 0212 886 31 63, Faks: 90 212 886 90 16
 Phone: 90 212 886 31 63, Fax: 90 212 886 90 16

X KLEMENS LİSTESİ

X TERMINAL LİST

KLEMENS NO	ACIKLAMA	SAYFA NO
1-2	CIKIS İLETKENLIK YUKSEK	6
1-3	YUKSEK SICAKLIK	6
1-4	HAM SU TANKI ALT SEVIYE	6
1-5	ANTISKALANT DOZAJ ALT SEVIYE	6
1-6	SBS DOZAJ ALT SEVIYE	6
1-7	ASIT DOZAJ ALT SEVIYE	7
1-8	ALCAK BASINC	7
1-9	YUKSEK BASINC	7
1-10	URUN SU TANKI UST SEVIYE	7
1-11	ON ARITMA DEVRE DISI	7
1-12	ORP YUKSEK SINYALI	7
1-13	PH YUKSEK SINYALI	7
1-14	ACIL STOP (DISARIDAN DURDURMA)	7
1-15	YIKAMA TANKI UST SEVIYE	7
1-16	YIKAMA TANKI ALT SEVIYE	6
1-17	YEDEK	9
18-19	24 VDC BESLEME	9
20-23	SERVIS GIRIS VANASI AC	9
21-23	DURULAMA GIRIS VANASI AC	9
22-23	YIKAMA TANKI DOLUIM VANASI AC	9

TERMINAL NO	DESCRIPTION	PAGE NO
1-2	OUTLET COND. HIGH	6
1-3	HIGH TEMPERATURE	6
1-4	RAW WATER TANK LOW LEVEL	6
1-5	ANTISKALANT DOSING TANK LOW LEVEL	6
1-6	SBS DOSING TANK LOW LEVEL	6
1-7	ASIT DOSING TANK LOW LEVEL	7
1-8	LOW PRESSURE	7
1-9	HIGH PRESSURE	7
1-10	PRODUCT WATER TANK HIGH LEVEL	7
1-11	PRE-TREATMENT OFF	7
1-12	ORP HIGH SIGNAL	7
1-13	PH HIGH SIGNAL	7
1-14	EMERGENCY STOP (REMOTE STOP)	7
1-15	CLEANING TANK HIGH LEVEL	7
1-16	CLEANING TANK LOW LEVEL	6
1-17	SPARE	9
18-19	24 VDC SUPPLY	9
20-23	SERVICE INLET VALVE OPEN	9
21-23	RINSE INLET VALVE START	9
22-23	CLEANING TANK VALVE START	9

REV.NO/REV. NO	REV.YAPAN/REV. BY	CIZIM TARİHİ/DRAWING DATE	01/01/2011	ELEKTRİK PROJESİ / ELECTRICAL PROJECT	TFM	KONTROL PANOSU / CONTROL PANEL	SAYFA ACIKLAMA PAGE EXPLANATION	-
-	-	CIZEN/DRAWER	KEMAL GENIS	KONTROL PANOSU / CONTROL PANEL			PAGE EXPLANATION	
-	-	KONTROL/CONTROL	ILKER AKBAS	KONTROL PANOSU / CONTROL PANEL			TOTAL PAGE / PAGE #	
2011-00	KEMAL GENIS	STOK KODU/STOCK CODE	****	KONTROL PANOSU / CONTROL PANEL			TOTAL PAGE / PAGE #	
1	2	3	4	5	6	7	8	11

W aquamatchtürkiye
 24 saatlik servis - 24 hours and 24 hours service
 Yabanci dilde hizmetler için: 0312 886 31 63
 Telefon: 90 (0)212 886 31 63 Fax: 90 (0)212 886 90 16

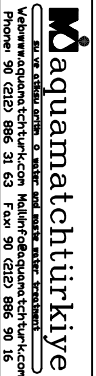
X KLEMENS LİSTESİ

X TERMINAL LİST

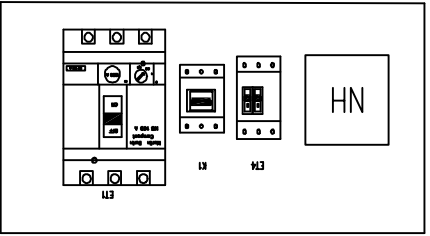
KLEMENS NO	ACIKLAMA	SAYFA NO
24-25	YIKAMA POMPASI START SİGER PANO (KURU KONTAK)	9
26-27	SİSTEM DEVREDE (KURU KONTAK)	9
28-29	SİSTEM BEKLEMEDE (KURU KONTAK)	9
30-31	SİSTEM ARIZADA (KURU KONTAK)	9
32-33	FLUSH VANASI AC (vff:220 VAC 50 Hz)	10
34-35	YIKAMA POMPASI START (DISARDAN_PANO 2)	10
36-37	YIKAMA POMPASI START (DISARDAN_PANO 3)	10
38-39	ANTISKALANT DOZAJ START (vff:220 VAC 50 Hz)	10
40-41	SBS DOZAJ START (vff:220 VAC 50 Hz)	10
42-43	ASIT DOZAJ START (vff:220 VAC 50 Hz)	10
44-45	220 VAC BESLEME (vff:220 VAC 50 Hz)	6
46-47	220 VAC BESLEME (vff:220 VAC 50 Hz)	6
48-49-50	PM 1051 START (vff:380 VAC 50 Hz)	5
51-52-53	PM 701A START (vff:380 VAC 50 Hz)	5
54-55-56	PM 701B START (vff:380 VAC 50 Hz)	5
57-58	PANO 220 VAC BESLEME (vff:220 VAC 50 Hz) UPS	6

TERMINAL NO	DESCRIPTION	PAGE NO
24-25	CLEANING PUMP START OTHER PANEL (DRY CONTACT)	9
26-27	SYSTEM RUNNING (DRY CONTACT)	9
28-29	SYSTEM STAND-BY (DRY CONTACT)	9
30-31	SYSTEM FAULT (DRY CONTACT)	9
32-33	FLUSH VALVE OPEN (vff:220 VAC 50 Hz)	10
34-35	CLEANING PUMP START (OTHER PANEL2)	10
36-37	CLEANING PUMP START (OTHER PANEL3)	10
38-39	ANTISCALANT DOSING START (vff:220 VAC 50 Hz)	10
40-41	SBS DOSING START (vff:220 VAC 50 Hz)	10
42-43	ASIT DOSING START (vff:220 VAC 50 Hz)	10
44-45	220 VAC SUPPLY (vff:220 VAC 50 Hz)	6
46-47	220 VAC SUPPLY (vff:220 VAC 50 Hz)	6
48-49-50	PM 1051 START (vff:380 VAC 50 Hz)	5
51-52-53	PM 701A START (vff:380 VAC 50 Hz)	5
54-55-56	PM 701B START (vff:380 VAC 50 Hz)	5
57-58	PANEL 220 VAC FEED (vff:220 VAC 50 Hz) UPS	6

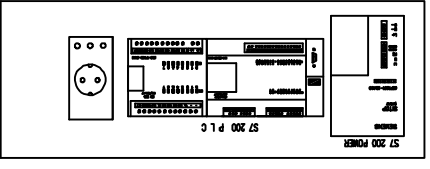
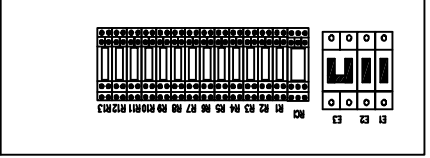
REV.NO/REV. NO	REV.YAPAN/REV. BY	CIZIM TARİHİ/DRAWING DATE	01/01/2011	ELEKTRİK PROJESİ / ELECTRICAL PROJECT	TFM	KONTROL PANOSU / CONTROL PANEL	SAFHA ACIKLAMA PAGE EXPLANATION	TOTAL SAYFA / SAFTA # TOTAL PAGE / PAGE #	14	12
2011-00	KEMAL GENIS	KONTROL/CONTROL STOK KODU/STOCK CODE	****	KONTROL PANOSU / CONTROL PANEL	TFM					
1	2	3	4	5	6	7	8			



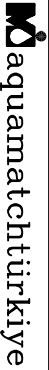
1 2 3 4 5 6 7 8

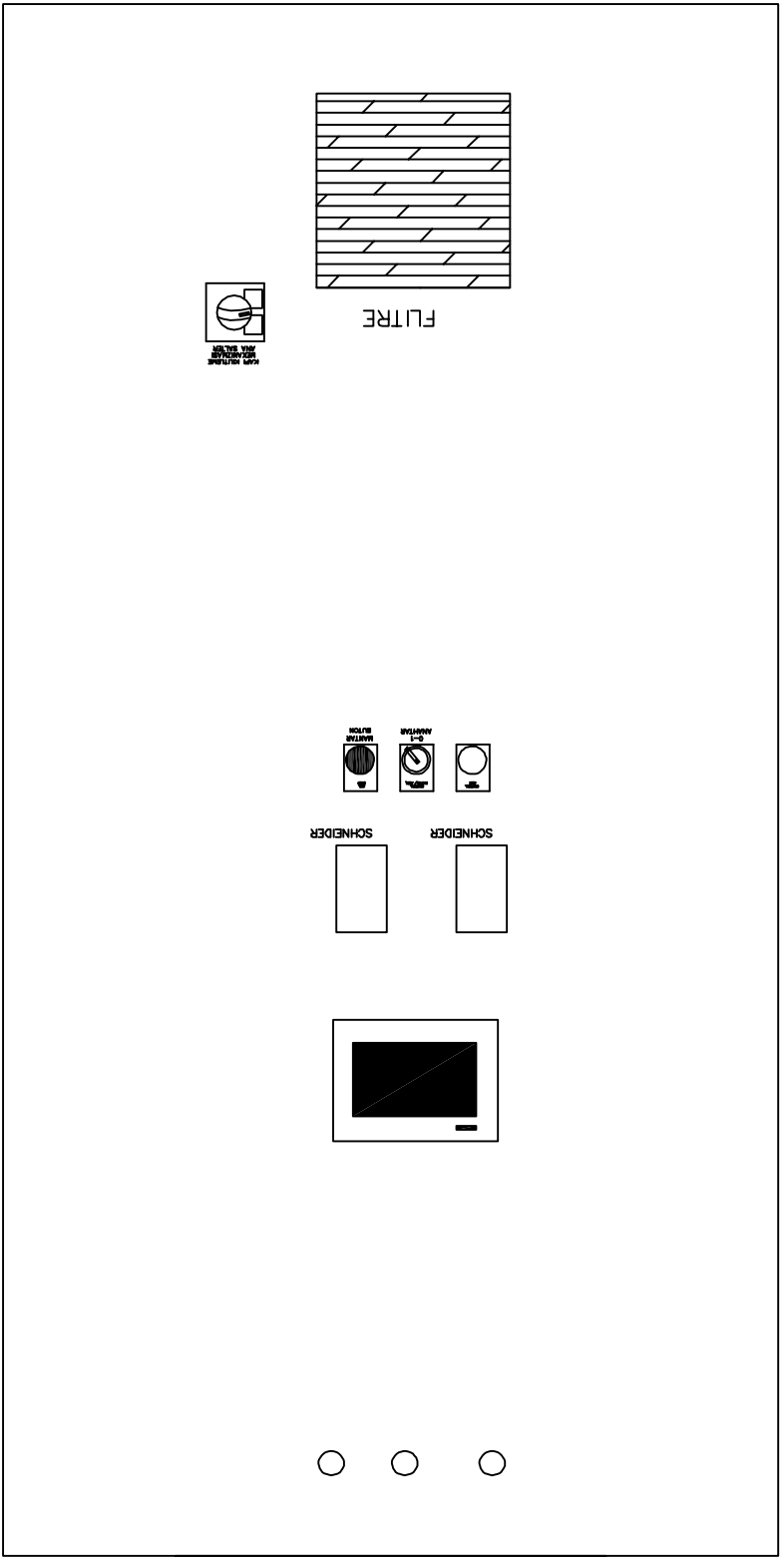
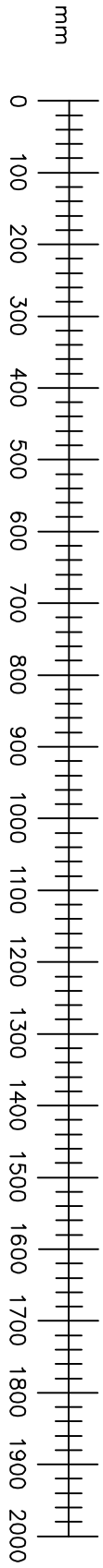


SCHNEIDER
ALTIVAR



1x37 kW
1x45 kW

REV.NO/REV. NO	REV.YAPAN/REV. BY	CIZIM TARİHİ/DRAWING DATE	ELEKTRİK PROJESİ / ELECTRICAL PROJECT	 Aquamatch Türkiye Akademi Sokakı No: 2/1 Kat: 2. Kat Beşiktaş / İstanbul / Türkiye Web: www.aquamatchturkiye.com, Mail: info@aquamatchturkiye.com Phone: 90 (0212) 886 31 63 Fax: 90 (0212) 886 90 16	SAYFA AÇIKLAMA PAGE EXPLANATION	-
-	-	CİZİM/DRAWER	TFM		TOPLAM SAYFA / SAYFA # TOTAL PAGE / PAGE #	
2011-00	KEMAL GENIS	KONTROL/CONTROL STOK KODU/STOCK CODE	KONTROL PANOSU /CONTROL PANEL		7	13



TAVAN HAVALANDIRMA

2x37 kW
2x45 kW

REV.NO/REV. NO	REV.YAPAN/REV. BY	CIZIM TARİHİ/DRAWING DATE	ELEKTRİK PROJESİ / ELECTRICAL PROJECT	 aquamatçtürkiye <small>AKUMATÇI, ELEKTRİK, ENERJİ VE SİGORTA ÇÖZÜMLERİ</small> <small>Yahyanevler Cad. No: 21 Kat: 2/1 Beşiktaş / İstanbul</small> <small>Web: www.aquamatcturkiye.com Mail: info@aquamatcturkiye.com</small> <small>Phone: 90 (0212) 886 31 63 Fax: 90 (0212) 886 90 16</small>	SAYFA AÇIKLAMA	-	
-	-	CİZEN/DRAWER	KEMAL GENIS		PAGE EXPLANATION		
2011-00	KEMAL GENIS	KONTROL/CONTROL	ILKER AKBAS	KONTROL PANOSU / CONTROL PANEL	TOPLAM SAYFA / SAYFA #	14	
1	2	3	4	5	TOTAL PAGE / PAGE #	14	
1	2	3	4	5	6	7	
H	G	F	E	D	C	B	A