

1.1 Getting to know your ALLROUNDER

1.1.1 ALLROUNDER 420/470 S Technical Data

420 S / 470 S Technical Data

Machine Type		420 S / 470 S		
EUROMAP size ^{1) 4)}		1000-150/1300-150	1000-350/1300-350	1000-675/1300-675
Clamping Unit				
Clamping force	max. kN	1000 / 1300		
Closing force	max. kN	45		
Opening force / increased	max. kN	40 / 320		
Opening stroke	max. mm	575		
Mould height	min. mm	225 / 275		
Clamping platen daylight	max. mm	800 / 850		
Tie bar daylight	mm	420x420 / 470x470		
Mould clamping platens (b x h)	mm	650 x 650		
Weight of movable mould half	max. kg	600		
Ejector force	max. kN	52		
Ejector stroke	max. mm	175		
Hydraulics, drive, general				
Drive power of the hydraulic pump	kW	18,5	18,5	22
Total connected load	²⁾ kW	29,5	29,9	37,8
Colour: plastic coated, structure light gray/mint green				
Control cabinet				
Safety standard according to		DIN EN 60204		
Single phase socket		1 x 10 A		
Three phase socket		1 x 16 A		
Injection unit		150	350	675
Screw diameter	mm	25/30/35	35/40/45	45/50/55/60
Effective screw length	L/D	24/20/17	23/20/18	22/20/18/16,5
Screw stroke	max. mm	110	145	180
Calculated injection volume	max. cm ³	54/78/106	139/182/106	286/353/427/508
Shot capacity	³⁾ max. g/PS	45/65/89	117/153/194	240/297/360/427
Injection pressure	⁴⁾ max. bar	2500/2210/1620	2500/2120/1670	2500/2080/1720/1440
Injection flow	⁴⁾ max. cm ³ /s	82/118/162	128/168/212	138/170/208/246 / 174/214/260/308
Back pressure positive / negative	max. bar	350 / 200	350 / 160	350/160
Circumferential screw speed	max. m/min.	66/80/80	47/53/60	47/53/58/63 / 59/66/73/79
Screw torque	max. Nm	300/350/350	560/640/705	880
Nozzle contact force	max. kN	55 / 70	55 / 70	70
Nozzle retraction stroke	max. mm	300	300	400
Installed cylinder heating power	W	4 x 2100	4 x 2200	6 x 2200
Installed nozzle heating power	W	600	600	600
Material hopper capacity	l	50	50	50
Horizontal injection position	max. mm	170		
Machine dimensions and weights				
Oil capacity	l	250		
Net weight (basic machine)	kg	4950	5100	5400
Electrical connection (pre-fused)	²⁾ A	80	80	100

¹⁾ 1st figure: clamping force (kN)

2nd figure: max. dosage volume (cm³) x max. injection pressure (kbar)

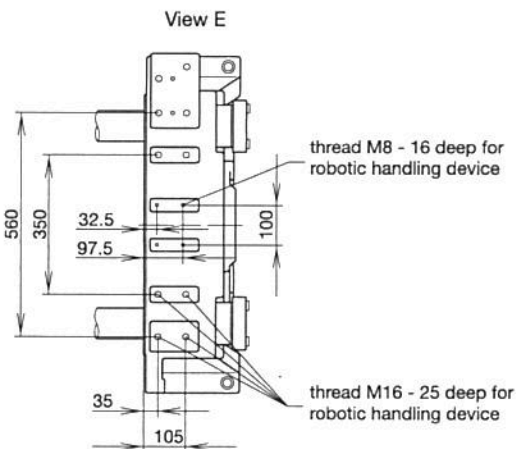
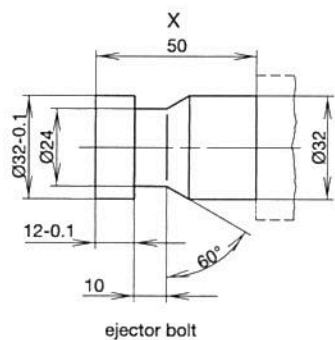
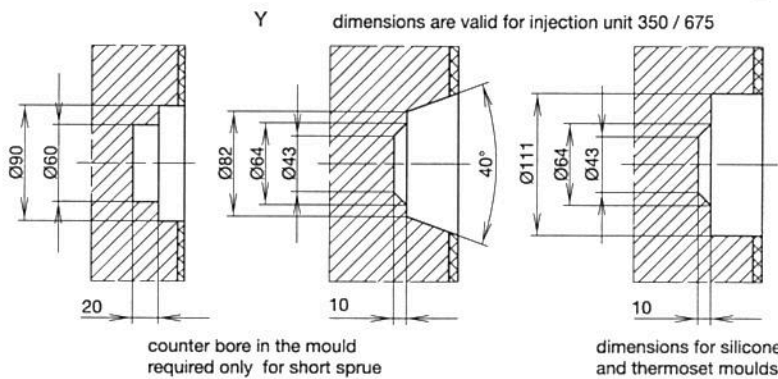
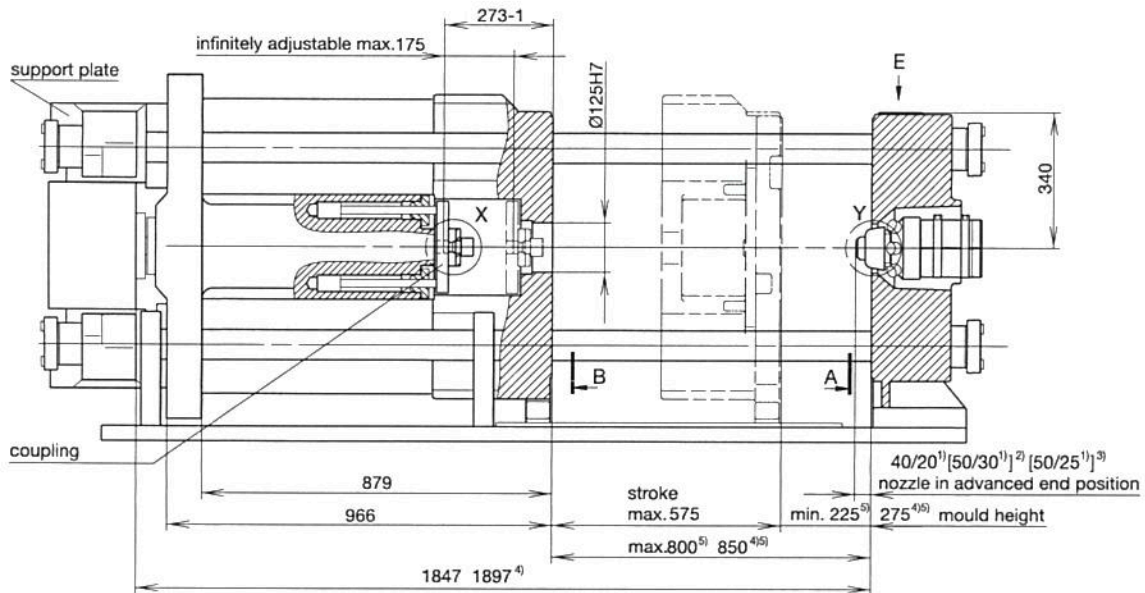
²⁾ Values refer to 400 V/50 Hz. The load is symmetrically distributed on three phases (observe phase loading when installing new equipment)

³⁾ calculated with vol. factor = 0,8

1.1.2 Mould dimensions / mould weights

Mould dimensions
ALLROUNDER 420/470 S
Part 1

The technical data specifications refer to those at the time of printing. We reserve the right of modification in the interest of continuous further development.



() dimensions apply to 470 S
¹ dimensions apply to thermoset moulds
² dimensions apply to injection unit 350
³ dimensions apply to injection unit 675
⁴ dimensions apply to 470 S. Optional with 420 S
⁵ parallelity of the platens and moulds in accordance with EUROMAP 9
 see separate dimension sheet for parting line unit

Mould dimensions
ALLROUNDER 420/470 S
Part 2

