

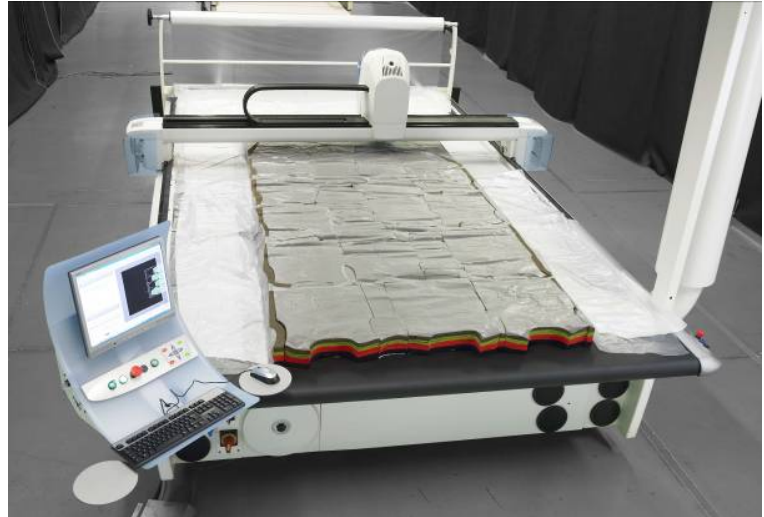


# VectorFashionM88



## Key characteristics

- The VectorFashionM88 is a productive tool capable of cutting knitted fabrics with an unmatched cutting height.
- The VectorFashionM88 lets you offer products of impeccable quality while keeping costs down.

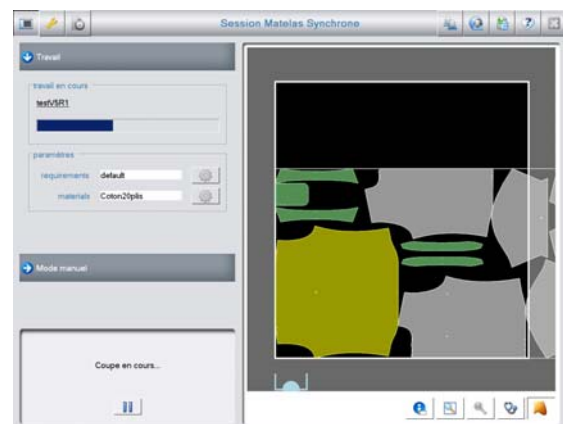
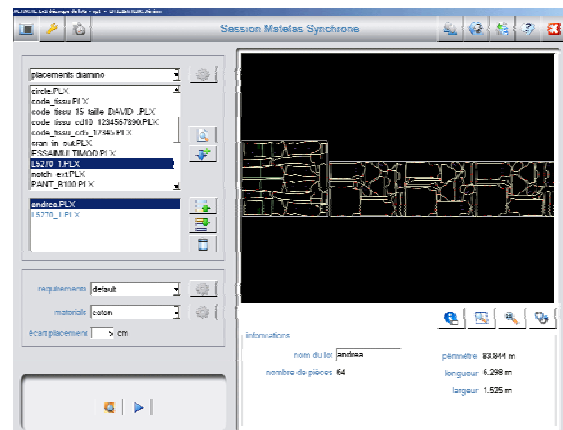


## OVERVIEW

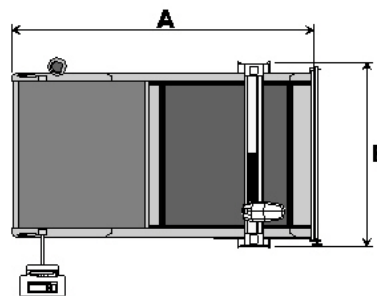
Specializing in the mass production of knitwear, the VectorFashionMH8 can process vast quantities of materials.

## OPERATION

It is controlled by a new generation of software that reduces fabric consumption by optimizing markers and cutting pieces at a tangent.



## TECHNICAL SPECIFICATIONS



TECHNICAL SPECIFICATIONS	VectorFashionM88 -71	VectorFashionM88 -86
Cutting window effective width	71'' – 1.8 m	86'' – 2.2 m
Cutting window effective length	1.8 m	1.8 m
Operational cutting height	8 cm	8 cm
Width A	4.810 m	4.810 m
Length B	2.60 m	3.00 m
Preprogrammed cutting parameters	Yes	Yes
Display of markers and shapes to be cut, cutting simulation, permanent display of production data and machine performance	Yes	Yes
EIA RS 274D and ISO 6983 data compatibility	Yes	Yes
MH8HEAD high performance cutting head, sharpening system configurable according to the textile application and heated drill controlled by computer	Yes	Yes
Process-oriented operating software	Yes	Yes
Optimized cutting of pieces at a tangent (GPT Management of proximities and tangents)	Yes	Yes
Digitally controlled vacuum level for material hold	No	No
Smart performance reporting	No	No
Access to remote experts for machine optimization	Yes	Yes
Cutting while conveyor advances (Eclipse)	No	No
Preventive maintenance with proactive alerts	No	No
Automatic machine check-up	No	No

TECHNICAL SPECIFICATIONS	VectorFashionM88 -71	VectorFashionM88 -86
Weight	3,840 kg	4,320 kg
Humidity	Up to 40°	Up to 40°
Humidity	<95 %	<95 %
Noise level	< 73dBA	< 73dBA
Average power consumption	15 kW	15 kW
Installed electrical power	31.5 kW	31.5 kW

For more information:

[www.lectra.com](http://www.lectra.com)

